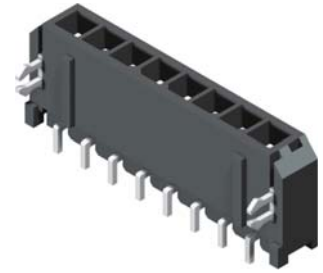




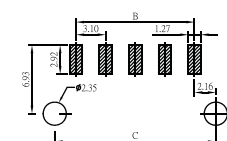
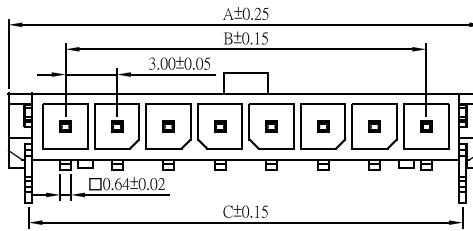
3.0mm Wafer Single row SMT Right Angle Type

Specifications

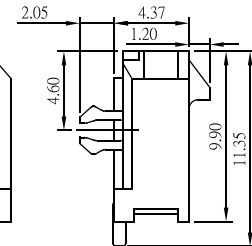
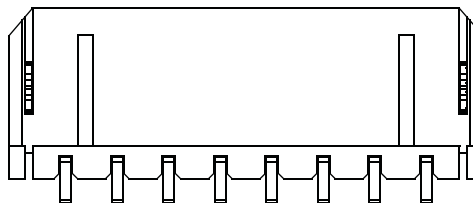
Current Rating: 5A AC,DC
 Voltage Rating: 250V AC,DC
 Temperature Range: -25°C to +105°C
 Contact Resistance: 10mΩ Max.
 Insulation Resistance: 1000MΩ Min.
 Withstanding Voltage: 1500V AC/minute
 Terminal: Brass / Tin Plated
 Material: Nylon 46,UL94V-0



| Part No. | Dimensions | | |
|-----------------|------------|-------|-------|
| | A | B | C |
| 3000MR-102TB1-U | 9.65 | 3.00 | 7.30 |
| 3000MR-103TB1-U | 12.65 | 6.00 | 10.30 |
| 3000MR-104TB1-U | 15.65 | 9.00 | 13.30 |
| 3000MR-105TB1-U | 18.65 | 12.00 | 16.30 |
| 3000MR-106TB1-U | 21.65 | 15.00 | 19.30 |
| 3000MR-107TB1-U | 24.65 | 18.00 | 22.30 |
| 3000MR-108TB1-U | 27.65 | 21.00 | 25.30 |
| 3000MR-109TB1-U | 30.65 | 24.00 | 28.30 |
| 3000MR-110TB1-U | 33.65 | 27.00 | 31.30 |
| 3000MR-111TB1-U | 36.65 | 30.00 | 34.30 |
| 3000MR-112TB1-U | 39.65 | 33.00 | 37.30 |



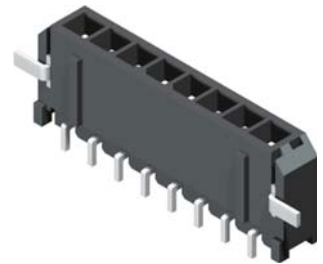
Recommended PCB Layout
(PCB TOLERANCE ±0.05)



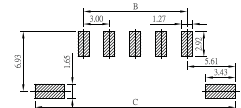
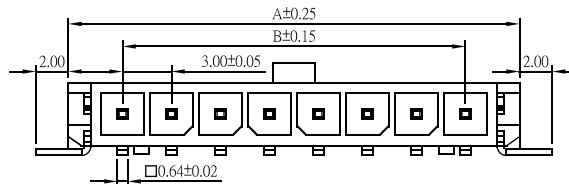
Part No.:3000MR-1XXTB1-U

Specifications

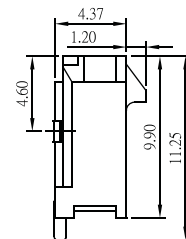
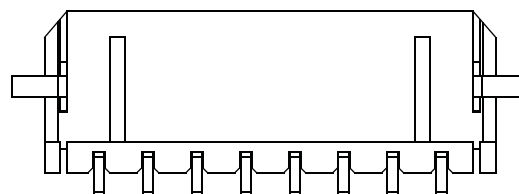
Current Rating: 5A AC,DC
 Voltage Rating: 250V AC,DC
 Temperature Range: -25°C to +105°C
 Contact Resistance: 10mΩ Max.
 Insulation Resistance: 1000MΩ Min.
 Withstanding Voltage: 1500V AC/minute
 Pin Material: Brass / Tin Plated
 Material: Nylon 46,UL94V-0



| Part No. | Dimensions | | |
|-----------------|------------|-------|-------|
| | A | B | C |
| 3000MR-102TB2-U | 9.65 | 3.00 | 14.20 |
| 3000MR-103TB2-U | 12.65 | 6.00 | 17.20 |
| 3000MR-104TB2-U | 15.65 | 9.00 | 20.20 |
| 3000MR-105TB2-U | 18.65 | 12.00 | 23.20 |
| 3000MR-106TB2-U | 21.65 | 15.00 | 26.20 |
| 3000MR-107TB2-U | 24.65 | 18.00 | 29.20 |
| 3000MR-108TB2-U | 27.65 | 21.00 | 32.20 |
| 3000MR-109TB2-U | 30.65 | 24.00 | 35.20 |
| 3000MR-110TB2-U | 33.65 | 27.00 | 38.20 |
| 3000MR-111TB2-U | 36.65 | 30.00 | 41.20 |
| 3000MR-112TB2-U | 39.65 | 33.00 | 44.20 |



Recommended PCB Layout
(PCB TOLERANCE ±0.05)



Part No.:3000MR-1XXTB2-U

Housing wafer Terminal



ROHS