

LARGE CAN TYPE

HV

Series

No Sparks With DC Overvoltage

JAMICON®

- No sparks with specified DC overvoltage applied.
- Withstanding 3000 hours application of rate ripple current at 105°C.

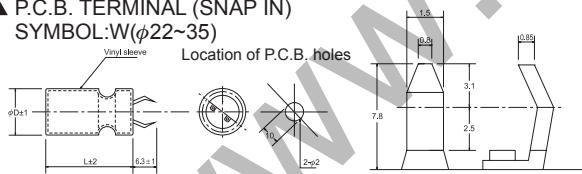


● SPECIFICATION

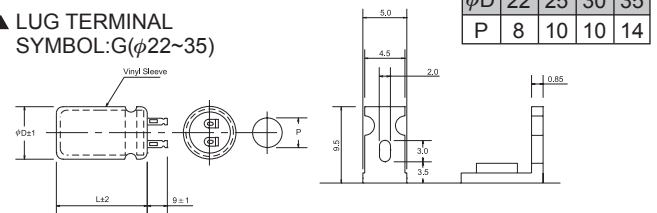
Item	Characteristic		
Operation Temperature Range	-25 ~ +105°C		
Rated Working Voltage	200 , 400VDC		
Capacitance Tolerance (120Hz 20°C)	±20%(M)		
Leakage Current (20°C)	$I \leq 0.02CV$ or 3 (mA) *Whichever is smaller after 5 minutes I : Leakage Current(μA) C : Rated Capacitance(μF) V : Working Voltage(V)		
Surge Voltage (20°C)	W.V.	200	400
	S.V.	250	450
Dissipation Factor (tan δ) (120Hz 20°C)	≤0.15		
Low Temperature Stability	Impedance ratio at 120Hz		
	Rated Voltage (V)	200	400
	-25°C / +20°C	4	6
DC Overvoltage Test	When an excessive DC voltage is applied to the capacitors under the test condition on next page, the vent shall operate and then the capacitors shall become open-circuit without burning material.		
Load Life	After 3000 hours application of W.V. and +105°C ripple current value, the capacitor shall meet the following limits. (DC + ripple peak voltage ≤ rate working voltage)		
	Capacitance Change	≤ ±20% of initial value	
	Dissipation Factor	≤ 175% of initial specified value	
	Leakage current	≤ initial specified value	
Shelf Life	At +105°C, no voltage application after 1000 hours, the capacitor shall meet the limits for load life characteristics. (With voltage treatment)		

● TERMINAL TYPE

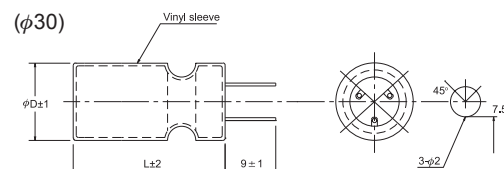
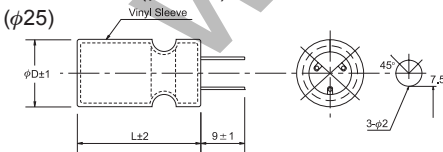
▲ P.C.B. TERMINAL (SNAP IN)
SYMBOL:W(φ22~35)



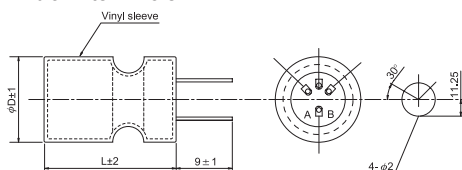
▲ LUG TERMINAL
SYMBOL:G(φ22~35)



▲ P.C.B. TERMINAL
SYMBOL:V(φ25~35)



(φ35)
A.B. blank terminals



● RIPPLE CURRENT COEFFICIENTS

Temperature(°C)	40	60	70	85	105
Multiplier	2.50	2.20	2.00	1.80	1.00

Frequency(Hz)	60	120	400	1k	10k
W.V.	Multiplier				
200V	0.80	1.00	1.10	1.30	1.40
400V	0.80	1.00	1.10	1.30	1.40

● CASE SIZE & MAX RIPPLE CURRENT

Case size : D x L (mm)
 Max ripple current : A(rms) 105°C 120Hz

μF	V(Code) Code	φD	200 (2D)				400 (2G)					
			22	25	30	35	22	25	30	35		
68	680											
						25						
						0.46						
82	820					30	25					
						0.55	0.52					
100	101					35	30					
						0.65	0.62					
120	121					40	30	25				
						0.76	0.68	0.67				
150	151					45	35	30				
						0.89	0.82	0.81				
180	181					50	40	30	25			
						1.03	0.95	0.89	0.91			
220	221						45	35	30			
							1.11	1.04	1.08			
270	271		25				50	40	35			
			0.89				1.28	1.22	1.27			
330	331		30	25				45	35			
			1.06	1.01				1.42	1.40			
390	391		35	30				50	40			
			1.24	1.18				1.62	1.61			
470	471		40	30	25						45	
			1.44	1.30	1.34						1.86	
560	561		45	35	30							
			1.65	1.51	1.58							
680	681		50	40	35							
			1.91	1.76	1.85							
820	821			50	35	30						
				2.13	2.03	2.03						
1000	102				45	35						
					2.50	2.38						
1200	122				50	40						
					2.86	2.75						
1500	152					45						L(mm)
						3.11						R.C.

● DC Overvoltage Test Condition

The vent will be operated and the capacity shall become an open circuit without burning the material when the following excess DC voltage is applied.

Rated Voltage	Capacitance	Current	Test DC Voltage
200 VDC	< 330 μF	4A	300 / 375 VDC
	330 ≦ C < 470 μF	5A	
	≧ 470 μF	7A	
400 VDC	< 100 μF	2A	500 / 600 VDC
	100 ≦ C < 220 μF	4A	
	≧ 220 μF	7A	