

10/100 BASE-T MAGNETICS MODULES

HS1606 2007

FEATURES:

- Designed to meet IEEE 802.3 requirements.
- Through-hole Low cost design

OPTIONS:

- Tape & Reel is Standard
- Bulk upon request

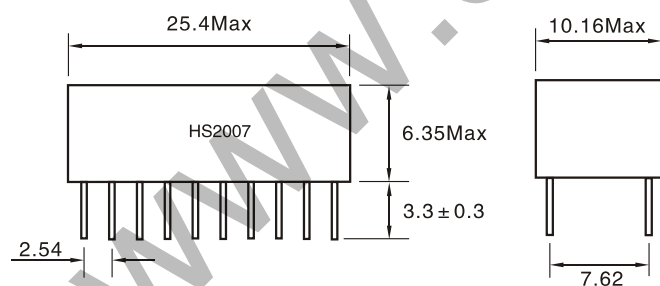
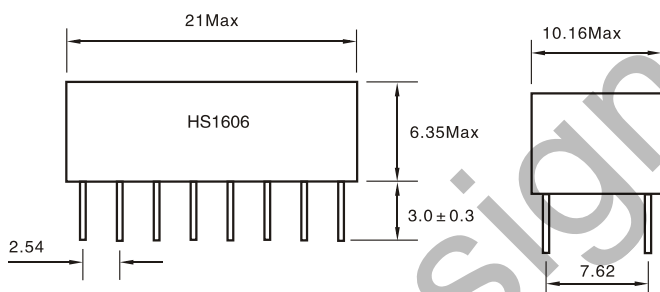
COMMON APPLICATIONS:

- Multiport Repeater & Ethernet Switching HUB
- Cable interface for isolation and low common mode emissions

ELECTRICAL SPECIFICATION @25°C–Operating Temperature 0°C to 70°C

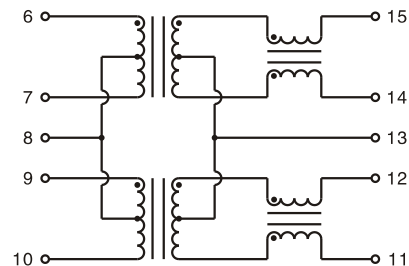
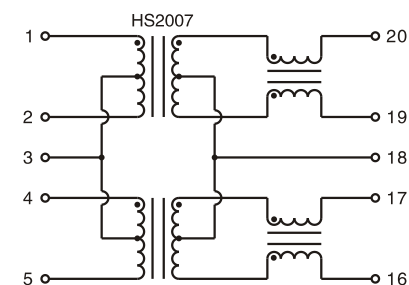
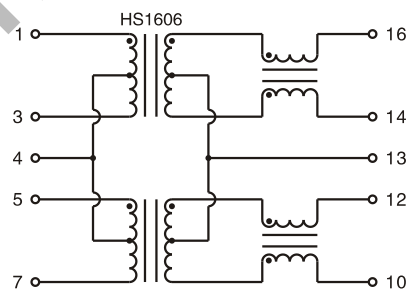
Part number	Turns Ratio ($\pm 2\%$)	Insertion Loss (Max)	Return Loss (dB Min)					Crosstalk (dB Min)				Differential to Common Mode Rejection (dB Min)		Hipot (Vrms Min)
			0.1–100MHz	2–30MHz	40MHz	50MHz	60–80MHz	1kHz	30MHz	60MHz	100MHz	1–60MHz	60–200MHz	
HS1606	1CT:1CT	-1.1	-16	-15.0	-13.0	-11	-38	-38	-38	-38	-38	-38	1500	
HS2007	1CT:1CT	-1.0	-16	-12	-10	-37	-25	-40	-40	-35	-40	-35	1500	

TECHNICAL INFORMATION & PHYSICAL CHARACTERISTICS:



- OCL:350 μ H Min 8mA DC bias (line side)
- Hi-Pot:1500 VRMS Min
- Soldering methods:Wave,Reflow
- Operating Temperature:0°C to 70°C
- Storage Temperature:-25°C to 85°C

DIMENSIONS:mm
Unless otherwise specified all tolerances are ± 0.25



Note: All specifications subject to change without notice.