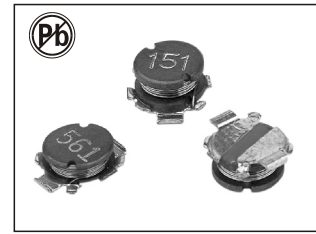


SURFACE-MOUNT POWER INDUCTORS

SB0602T-0603T SERIES



FEATURES:

- Ferrite Core Structure
- Low DC Resistance
- Large current up to 3.4A
- Excellent Mechanical Strength
- High Reliability and Excellent Solderability
- Low and square Profile
- High heat resistance

OPTIONS:

- Packaging: Tape & Reel is standard (Qty: 2000 pcs)
- Bulk packaging available for smaller quantities
- Tolerance: 10% and 5% is standard, tighter tolerances available

COMMON APPLICATIONS:

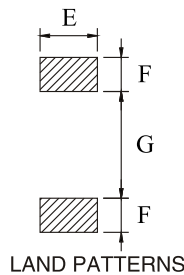
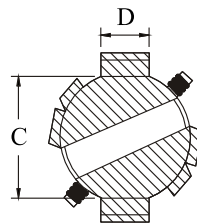
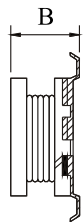
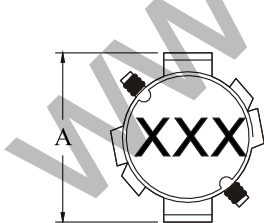
- VCRs, Notebook, DC/DC Converters
- Video Digital Cameras
- Communication System
- Automotive Systems Power supplier
- LCD PDP Televisions
- Hard Disk Drives, Topset, XDSL
- Network Systems
- Computer Peripheral Equipment

ELECTRICAL CHARACTERISTICS:

Part Number	L μH	Test Freq KHz	DCR Ω Max	IDC Max A	Part Number	L μH	Test Freq KHz	DCR Ω Max	IDC Max A
SB0602T-1R2M	1.2	100	0.02	3.40	SB0603T-151K	150	100	1.9	0.38
SB0602T-1R5M	1.5	100	0.03	3.10	SB0603T-181K	180	100	2.3	0.35
SB0602T-2R4M	2.4	100	0.04	2.40	SB0603T-221K	220	100	3.0	0.30
SB0602T-3R3M	3.3	100	0.05	2.20	SB0603T-271K	270	100	3.5	0.26
SB0602T-4R7M	4.7	100	0.07	1.80	SB0603T-331K	330	100	4.2	0.23
SB0602T-6R8M	6.8	100	0.10	1.60	SB0603T-391K	390	100	4.8	0.21
SB0602T-100M	10	100	0.14	1.30	SB0603T-471K	470	100	5.7	0.19
SB0602T-120M	12	100	0.18	1.20	SB0603T-561K	560	100	6.4	0.18
SB0602T-150M	15	100	0.20	1.00	SB0603T-681K	680	100	7.6	0.17
SB0602T-180M	18	100	0.24	0.95	SB0603T-821K	820	100	10	0.14
SB0602T-220M	22	100	0.27	0.90	SB0603T-102K	1000	100	12	0.13
SB0602T-270M	27	100	0.37	0.75	SB0603T-122K	1200	100	16	0.11
SB0602T-330M	33	100	0.43	0.70	SB0603T-152K	1500	100	19	0.10
SB0602T-390M	39	100	0.47	0.62	SB0603T-182K	1800	100	28	0.08
SB0602T-470M	47	100	0.66	0.56	SB0603T-222K	2200	100	30	0.075
SB0602T-560M	56	100	0.74	0.51	SB0603T-272K	2700	100	36	0.070
SB0602T-680M	68	100	1.01	0.45	SB0603T-332K	3300	100	48	0.065
SB0602T-820M	82	100	1.13	0.43	SB0603T-392K	3900	100	54	0.055
SB0602T-101K	100	100	1.31	0.41	SB0603T-472K	4700	100	63	0.050
					SB0603T-562K	5600	100	72	0.048

Note: 1. K= ± 10%, M= ± 20%, N= ± 30%

TECHNICAL INFORMATION:



CONSTRUCTION



LAND PATTERNS

- Inductor Testing: HP4284A (Equivalent acceptable)
 - DCR: QuadTech 1880 Milliohm meter
 - Q- HP4342A - SRF-HP4191A
 - IDCMax current is decreased 10% against its initial value
 - Operating temperature: -40°C to +105°C
 - Storage Temperature: -40°C to +105°C
 - Solder methods: Vapor Phase, Infrared Reflow
 - Resistance to soldering heat: 260°C for 10 seconds
 - Solvent resistance: Conforms to MIL-STD-202E
 - Marking: Inductance & Tolerance
- Note: All specifications subject to change without notice.

DIMENSIONS IN: mm

Part Number	A	B	C	D	E	F	G
SB0602T	7.3Max	2.9Max	5.0	2.0	3.0	2.0	4.4
SB0603T	7.3Max	3.3Max	5.0	2.0	3.0	2.0	4.4