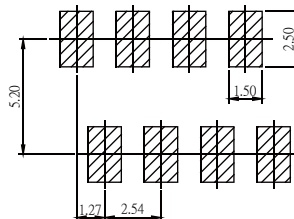
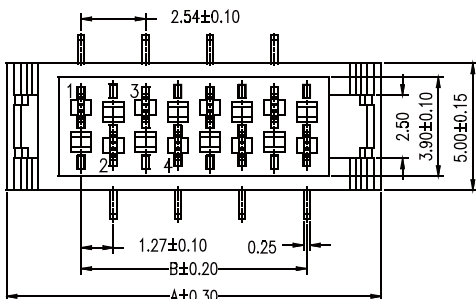
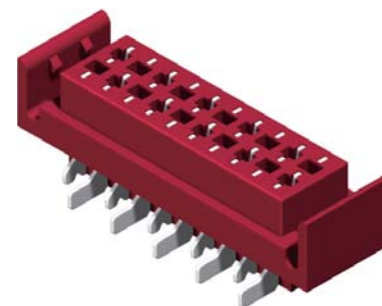




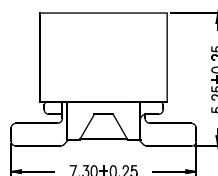
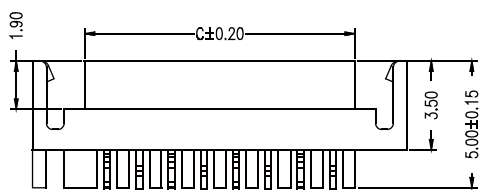
Mini Match Female SMT With Lock Type

Specifications
 Current Rate: 1.0 AMP
 Insulation Resistance: 100MΩ Min
 Contact Resistance: 20mΩ Max
 Dielectric Voltage: 500V AC for one minute
 Operation Temperature: -40°C to +105°C

Material
 Insulator: Polyester, UL 94V-0
 ©Standard: Nylon 46
 Terminal: Copper Alloy



Recommended PCB Layout
(PCB TOLERANCE ±0.05)



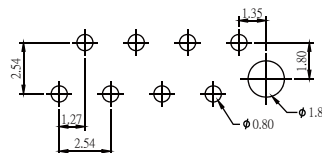
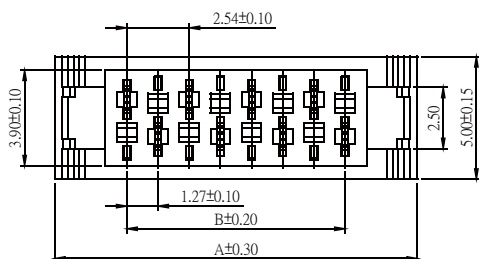
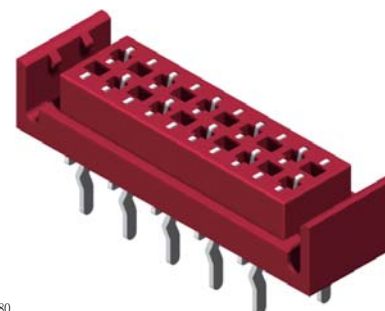
No. of Contacts	Dim. A	Dim. B	Dim. C
4	9.70	3.81	5.60
6	12.24	6.35	8.14
8	14.78	8.89	10.68
10	17.32	11.43	13.22
12	19.86	13.97	15.76
14	22.40	16.51	18.30
16	24.94	19.05	20.84
18	27.48	21.59	23.38
20	30.02	24.13	25.92

Part No.: MIMAM-XX-U

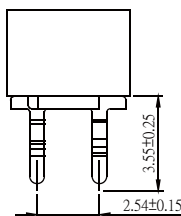
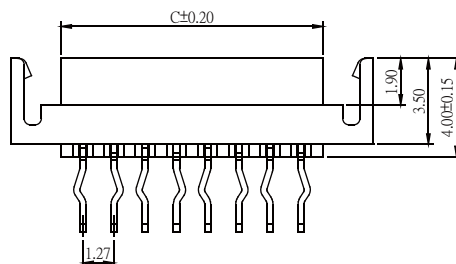
Mini Match Female Straight With Lock Type

Specifications
 Current Rate: 1 AMP
 Insulation Resistance: 100MΩ Min
 Contact Resistance: 20mΩ Max
 Dielectric Voltage: 500V AC for one minute
 Operation Temperature: -40°C to +105°C

Material
 Insulator: Polyester, UL 94V-0
 ©Standard: Nylon 46
 Terminal: Copper Alloy



Recommended PCB Layout
(PCB TOLERANCE ±0.05)



No. of Contacts	Dim. A	Dim. B	Dim. C
4	9.70	3.81	5.60
6	12.24	6.35	8.14
8	14.78	8.89	10.68
10	17.32	11.43	13.22
12	19.86	13.97	15.76
14	22.40	16.51	18.30
16	24.94	19.05	20.84
18	27.48	21.59	23.38
20	30.02	24.13	25.92

Part No.: MIMAS-XX-U

ORDER INFORMATION

