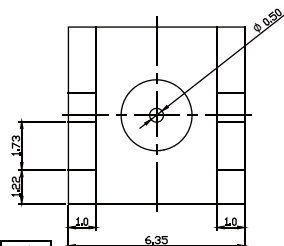
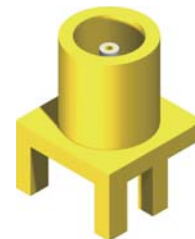
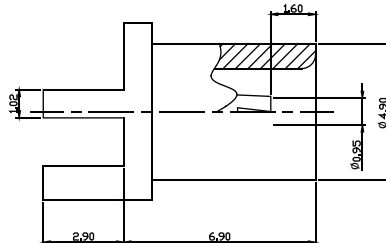


MCX & MMCX Conn. Series

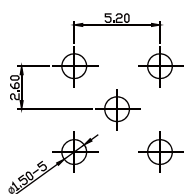


3	DIELECTRIC	TEFLON		1
2	PIN	BRASS	GOLD	1
1	BODY	BRASS	NICKEL	1
NO	DESCRIPTION	MATERIAL	FINISH	QTY

IMPEDANCE	50 OHM
FREQUENCY	0-6.0 GHz
DIELECTRIC WITHSTANDING VOLTAGE	1000 VRMS MIN
WORKING VOLTAGE	335 VRMS MAX.
INSULATION RESISTANCE	1000 MEGOHMS MIN
CONTACT RESISTANCE	INNER CONDUCTOR = 5.0 MILLIOHMS OUTER CONDUCTOR = 2.5 MILLIOHMS

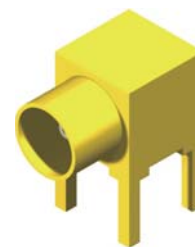
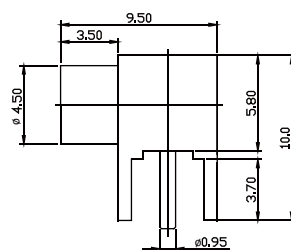


Part No.: **MCX005-F** GW-L
5:50 Ω 7:75 Ω

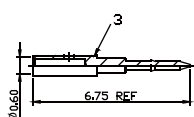


5	DIELECTRIC	TEFLON		1
4	DIELECTRIC	TEFLON		1
3	PIN	BRASS	GOLD	1
2	BODY	BRASS	GOLD	1
1	BODY	BRASS	GOLD	1
NO	DESCRIPTION	MATERIAL	FINISH	QTY

IMPEDANCE	50 OHM
FREQUENCY	0-6.0 GHz
DIELECTRIC WITHSTANDING VOLTAGE	1000 VRMS MIN
WORKING VOLTAGE	335 VRMS MAX.
INSULATION RESISTANCE	1000 MEGOHMS MIN
CONTACT RESISTANCE	INNER CONDUCTOR = 5.0 MILLIOHMS OUTER CONDUCTOR = 2.5 MILLIOHMS

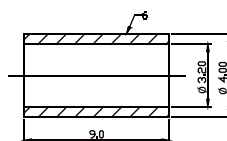
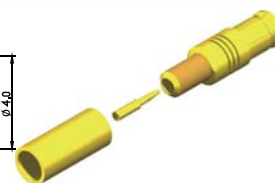
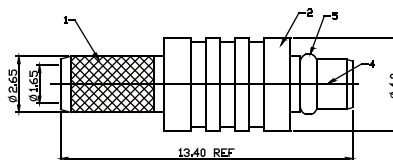


Part No.: **MCX006-F** GW-L
5:50 Ω 7:75 Ω

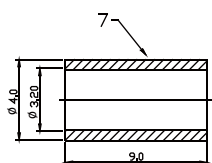


6	FERRULE	BRASS	GOLD	1
5	RETAINING	BRASS	GOLD	1
4	DIELECTRIC	TEFLON		1
3	PIN	BRASS	GOLD	1
2	BODY	BRASS	GOLD	1
1	BODY	BRASS	GOLD	1
NO	DESCRIPTION	MATERIAL	FINISH	QTY

IMPEDANCE	50 OHM
FREQUENCY	0-6.0 GHz
DIELECTRIC WITHSTANDING VOLTAGE	500 VRMS MIN
VOLTAGE RATING	170 VRMS MAX.
CONTACT RESISTANCE	INNER CONDUCTOR = 5.0 MILLIOHMS OUTER CONDUCTOR = 2.5 MILLIOHMS

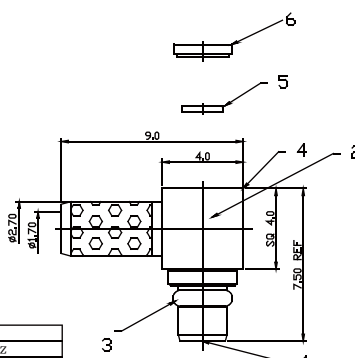


Part No.: **MMCX001-M** GW-L
5:50 Ω 7:75 Ω



7	FERRULE	BRASS	GOLD	1
6	COVER	BRASS	GOLD	1
5	INSULATOR	PDM		1
4	BODY	BRASS	GOLD	1
3	LINK LOCK	BRASS	GOLD	1
2	INSULATOR	TEFLON		1
1	CENTER CONTACT	BRASS	GOLD	1
NO	DESCRIPTION	MATERIAL	FINISH	QTY

IMPEDANCE	50 OHM
FREQUENCY	0-6.0 GHz
DIELECTRIC WITHSTANDING VOLTAGE	500 VRMS MIN
VOLTAGE RATING	170 VRMS MAX.
CONTACT RESISTANCE	INNER CONDUCTOR = 5.0 MILLIOHMS OUTER CONDUCTOR = 2.5 MILLIOHMS



Part No.: **MMCX002-M** GW-L
5:50 Ω 7:75 Ω