



Pin Header 3.96mm 1 Row H=3.18mm Right Angle Type

Specifications

Current Rate:7 AMP
 Insulation Resistance:1000MΩ Min.
 Contact Resistance:20mΩ Max.
 Dielectric Voltage:1000V AC for one minute
 Operation Temperature:-40°C to +105°C

Material

Insulator:Polyester,UL 94V-0
 ©Standard:LCP
 Terminal:Copper Alloy
 Plating:Tin Plated

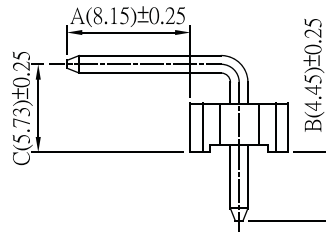
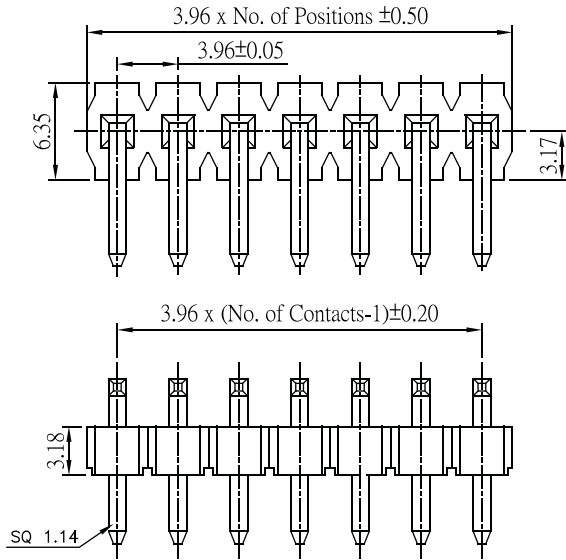
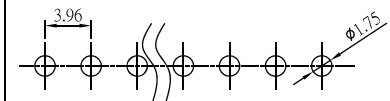


Table:

LEAD STYLE	Dimensions		
	A	B	C
01	8.15	4.45	5.73
02	13.60	4.00	8.13
03	10.75	4.50	9.48



Recommended PCB Layout
 (PCB TOLERANCE ±0.05)

Part No.:PH396R32-1XX-U

Pin Header 3.96mm 1 Row H=3.18mm Straight Type

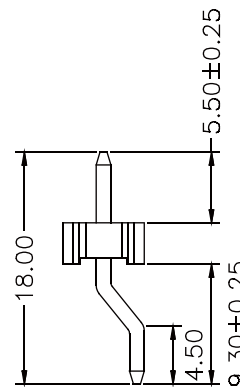
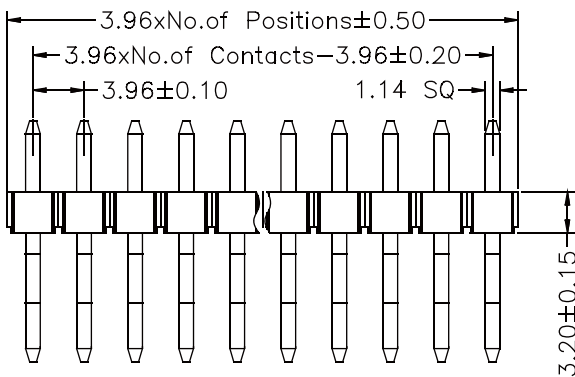
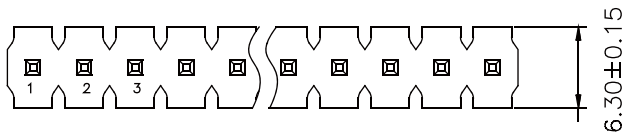
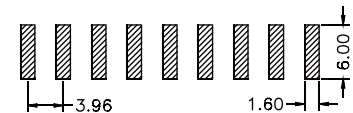


Table:

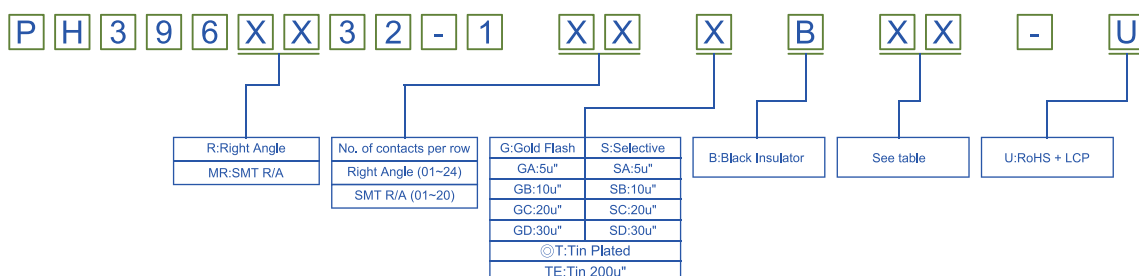
LEAD STYLE	DIMENSION		
	A	B	C
01	8.15	4.45	5.73
02	13.60	4.00	8.13
03	10.75	4.50	9.46



Recommended PCB Layout
 (PCB TOLERANCE ±0.05)

Part No.:PH396MR32-1XX-U

ORDER INFORMATION



©Standard Recommended

P in Header 3.96mm



ROHS

CONNECTOR MANUFACTURE