

Pin Header 4.2mm SMT / Straight Type

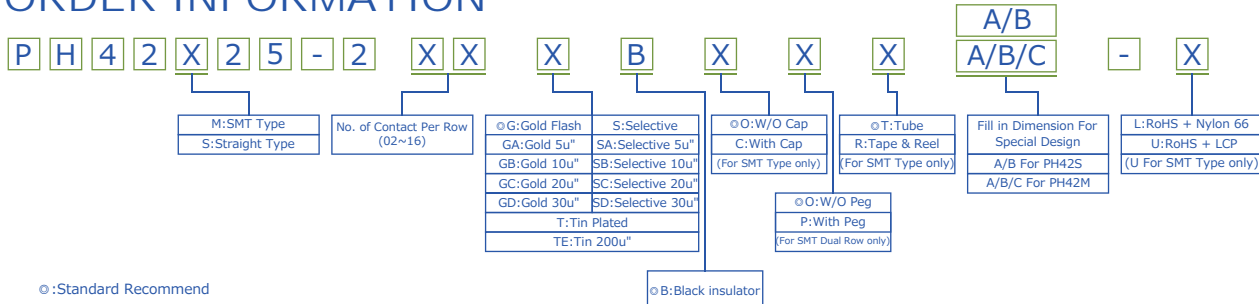
Specifications

Current Rate: 7 AMP
 Insulation Resistance: 1000MΩ Min.
 Contact Resistance: 20mΩ Max.
 Dielectric Voltage: 1000V AC for one minute
 Operation Temperature: -40°C to +105°C

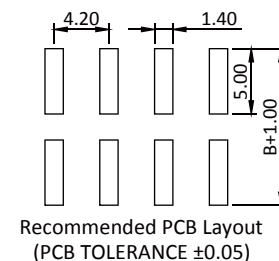
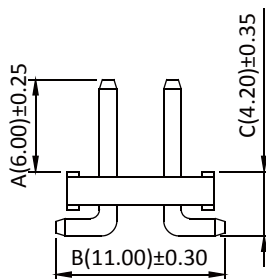
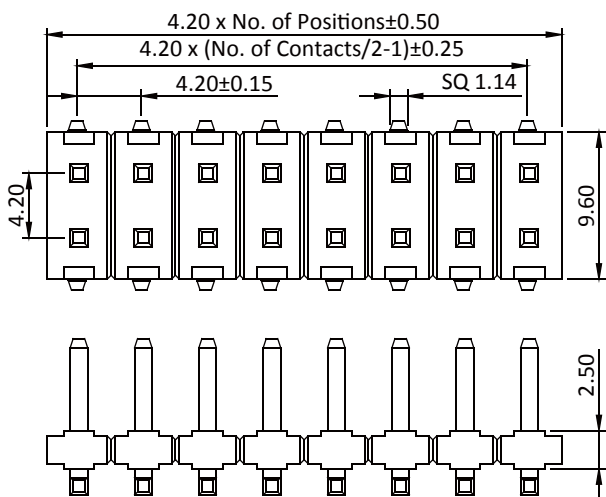
Material

Insulator: Polyester, UL 94V-0
 ◎Standard SMT: LCP
 Straight: Nylon 66
 Terminal: Copper Alloy
 Plating: Tin Plated

ORDER INFORMATION

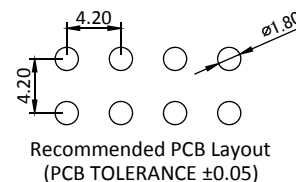
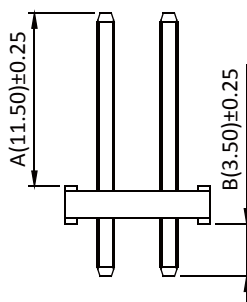
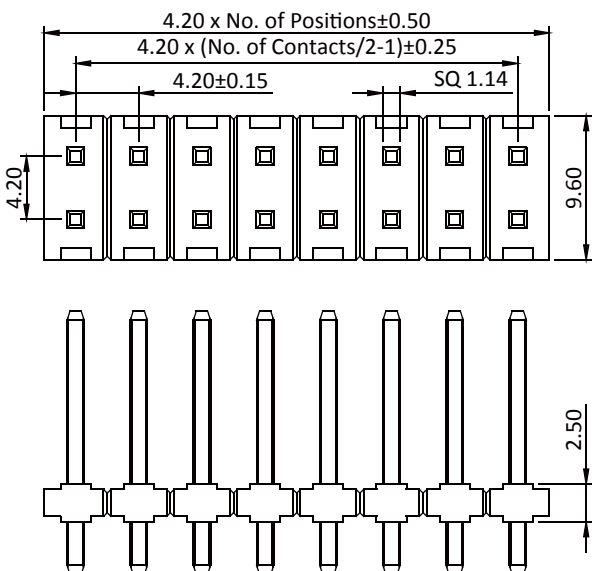


Pin Header 4.2mm 2 Row H=2.5mm SMT Type



Part No.: PH42M25-2XX-U

Pin Header 4.2mm 2 Row H=2.5mm Straight Type



Part No.: PS42S25-2XX-L