



# CONNECTORS MANUFACTURER

## Pin Header 5.08mm SMT / Stack SMT / R/A / R/A U / Straight / Stack Straight Type

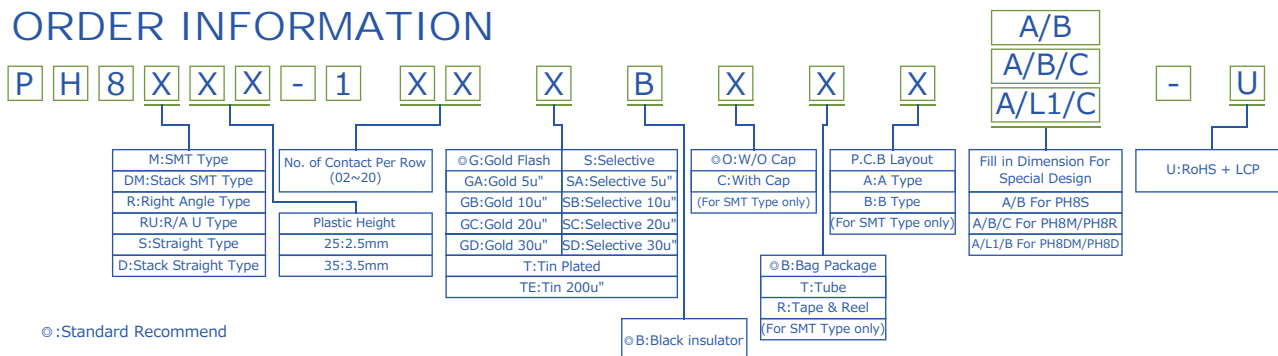
### Specifications

Current Rate: 7 AMP  
 Insulation Resistance: 1000MΩ Min.  
 Contact Resistance: 20mΩ Max.  
 Dielectric Voltage: 1000V AC for one minute  
 Operation Temperature: -40°C to +105°C

### Material

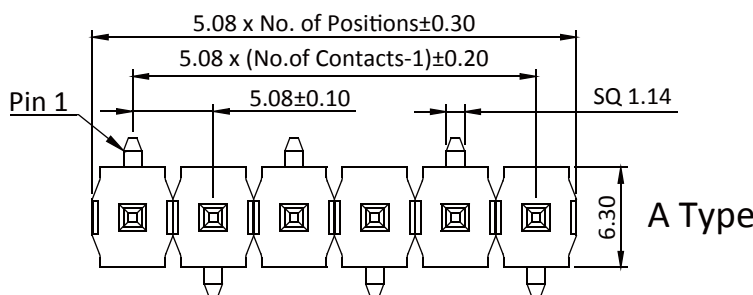
Insulator: Polyster, UL 94V-0  
 Standard: LCP  
 Terminal: Copper Alloy  
 Plating: Tin Plated

## ORDER INFORMATION

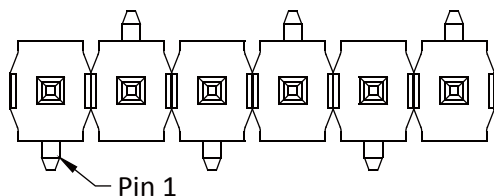


⊙: Standard Recommend

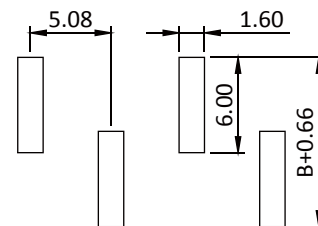
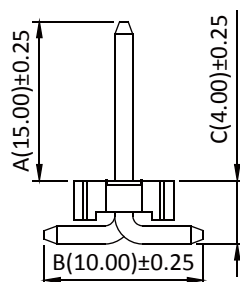
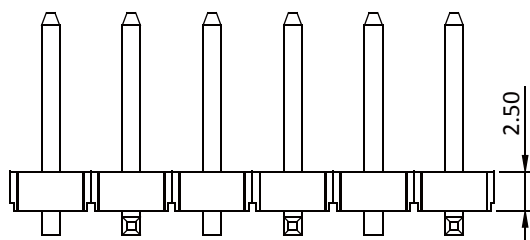
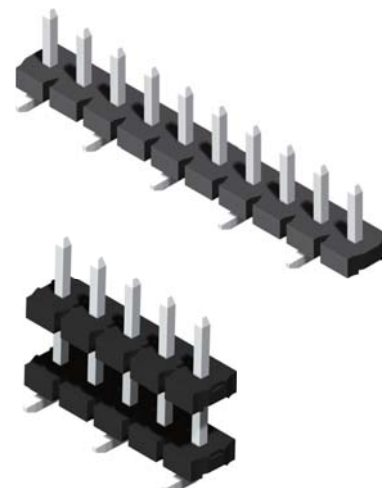
## Pin Header 5.08mm 1 Row H=2.5mm SMT / Stack SMT Type



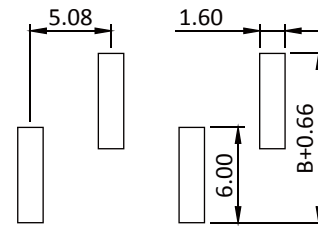
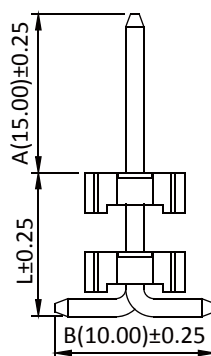
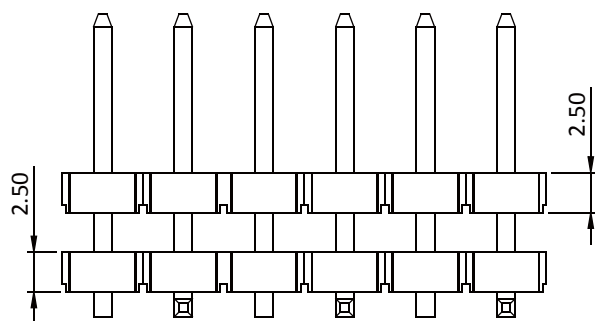
A Type



B Type



A Type



B Type

Recommended PCB Layout (PCB TOLERANCE ±0.05)

Part No.: PH8M25-1XX-U  
PH8DM25-1XX-U

P in Header 5.08mm



ROHS