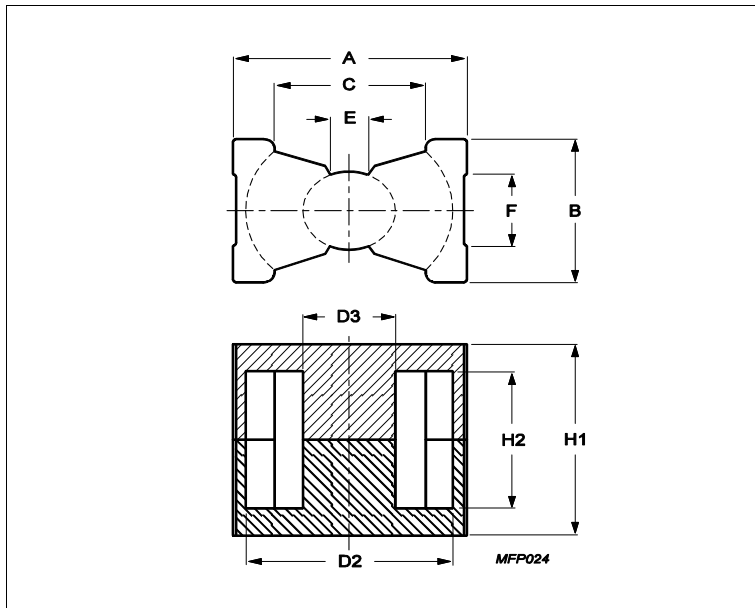


## Core **PQ26/20**



Effective parameters			
	Parameter	Value	Unit
$\Sigma(I/A)$	core factor (C1)	0.372	mm <sup>-1</sup>
Ve	effective volume	5470	mm <sup>3</sup>
Le	effective length	45	mm
Ae	effective area	121	mm <sup>2</sup>
Amin	minimum area	109	mm <sup>2</sup>
m	PQ26/20	≈ 30	g/set

Dimensions for product: PQ26/20						
	Nom	Tol +	Tol -	Max	Min	Unit
<b>A</b>	27.30	0.46	0.46	27.76	26.84	mm
<b>B</b>	19.00	0.45	0.45	19.45	18.55	mm
<b>C</b>					15.50	mm
<b>D2</b>	22.50	0.46	0.46	22.96	22.04	mm
<b>D3</b>	12.00	0.20	0.20	12.20	11.80	mm
<b>E</b>					6.00	mm
<b>F</b>					10.50	mm
<b>H1</b>	20.20	0.25	0.25	20.45	19.95	mm
<b>H2</b>	11.50	0.30	0.30	11.80	11.20	mm

Inductance factor				
Material	Value	Tol +	Tol -	Unit
3C94	6200	25%	25%	nH/turns <sup>2</sup>
3C95	7020	25%	25%	nH/turns <sup>2</sup>
3C96	5530	25%	25%	nH/turns <sup>2</sup>
3C97	7020	25%	25%	nH/turns <sup>2</sup>
3F36	3700	25%	25%	nH/turns <sup>2</sup>
3F46	2300	25%	25%	nH/turns <sup>2</sup>

Power loss: 3C94				
Measuring conditions			Max	Unit
100 kHz	200 mT	100 °C	2.700	W/set
Power loss: 3C95				
Measuring conditions			Max	Unit

## Core **PQ26/20**

Power loss: 3C95				
Measuring conditions			Max	Unit
100 kHz	200 mT	100 °C	2.600	W/set
100 kHz	200 mT	25 °C	2.800	W/set
Power loss: 3C96				
Measuring conditions			Max	Unit
100 kHz	200 mT	100 °C	2.500	W/set
400 kHz	50 mT	100 °C	0.980	W/set
Power loss: 3C97				
Measuring conditions			Max	Unit
100 kHz	200 mT	60 °C	2.700	W/set
100 kHz	200 mT	120 °C	2.600	W/set
100 kHz	200 mT	140 °C	3.300	W/set
Power loss: 3F36				
Measuring conditions			Max	Unit
500 kHz	50 mT	100 °C	0.820	W/set
500 kHz	100 mT	100 °C	6.300	W/set
Power loss: 3F46				
Measuring conditions			Max	Unit
1000 kHz	50 mT	100 °C	3.000	W/set
3000 kHz	10 mT	100 °C	1.900	W/set

Bsat					
Measuring conditions			Material	Min	Unit
25 kHz	250 A/m	100 °C	3C94	320	mT
25 kHz	250 A/m	100 °C	3C95	330	mT
25 kHz	250 A/m	100 °C	3C96	340	mT
25 kHz	250 A/m	100 °C	3C97	330	mT
25 kHz	250 A/m	100 °C	3F36	340	mT
25 kHz	250 A/m	100 °C	3F46	330	mT

Accessories		
Ordering name	Description	Ordering code
CLM/P-PQ26/20	Clamp, with ground pin	F0MPQ02620CLMP000P
CPV-PQ26/20-1S-12PD-Z	Coil former, termoplastic, vertical	F0PPQ02620CV01112P
CPV-PQ26/20-1S-12P-Z	Coil former, termoplastic, vertical	F0PPQ02620CV00112P