

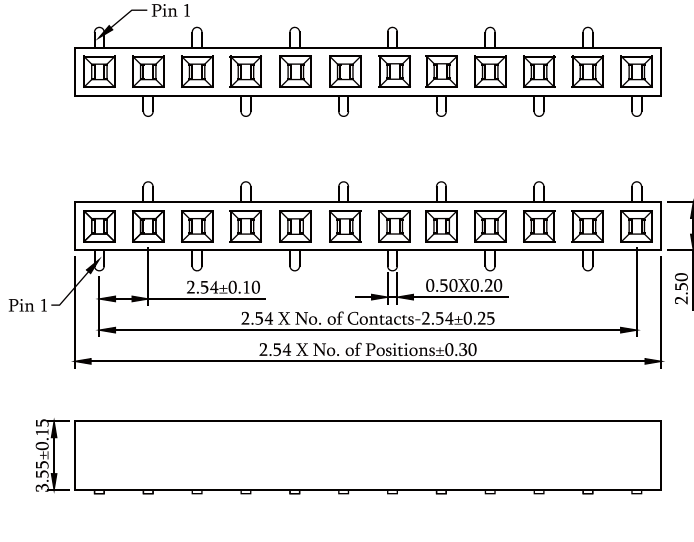
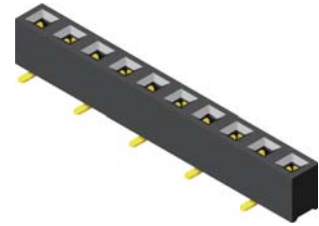
Female Header 2.54mm 1 Row H=3.55mm SMT Type

Specifications

Current Rate:3 AMP
 Insulation Resistance:1000MΩ Min.
 Contact Resistance:20mΩ Max.
 Dielectric Voltage:1000V AC for one minute
 Operation Temperature:-40°C to +105°C

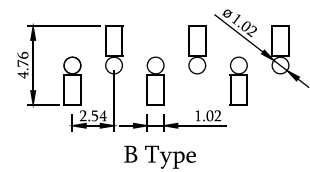
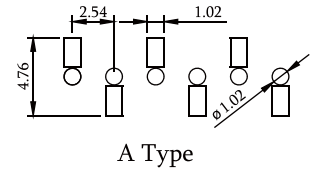
Material

Insulator:Polyester,UL 94V-0
 ◎Standard:Nylon 6T
 Terminal:Copper Alloy
 Plating:Gold Plated



A Type

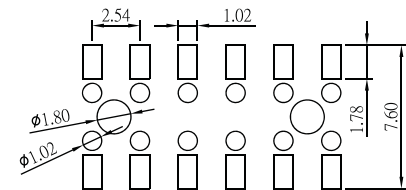
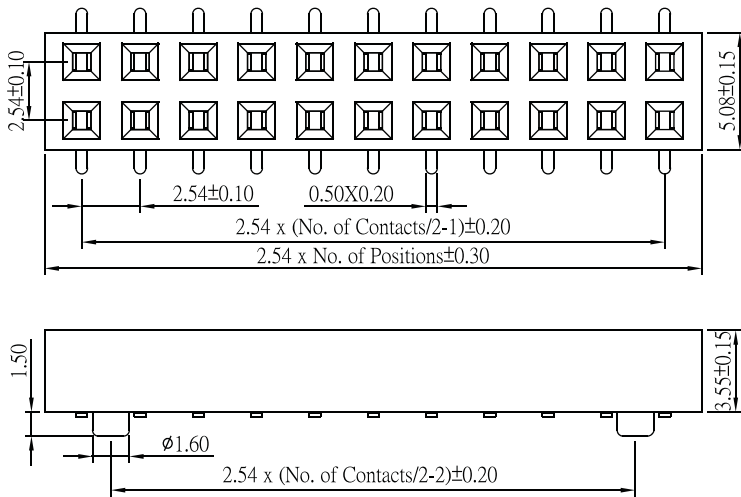
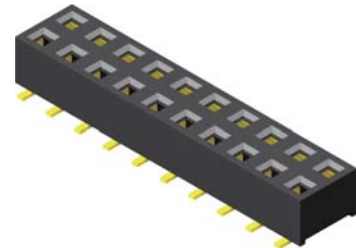
B Type



Recommended PCB Layout
(PCB TOLERANCE ±0.05)

Part No.:PS1M35-1XX-U

Female Header 2.54mm 2 Row H=3.55mm SMT Type



Recommended PCB Layout
(PCB TOLERANCE ±0.05)

Part No.:PS1M35-2XX-U

ORDER INFORMATION

