



CONNECTORS MANUFACTURER

Female Header 3.96mm SMT / Straight Type

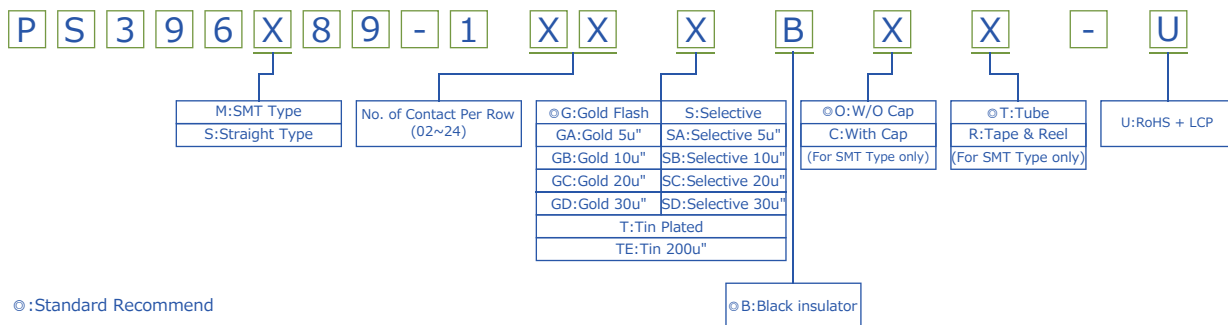
Specifications

Current Rate: 7 AMP
 Insulation Resistance: 1000MΩ Min.
 Contact Resistance: 20mΩ Max.
 Dielectric Voltage: 1000V AC for one minute
 Operation Temperature: -40°C to +105°C

Material

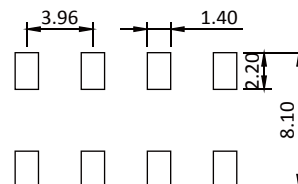
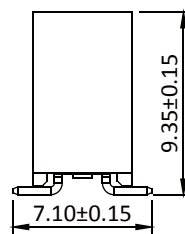
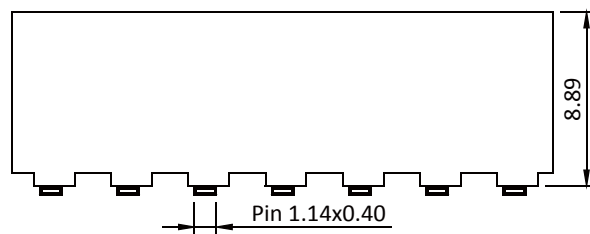
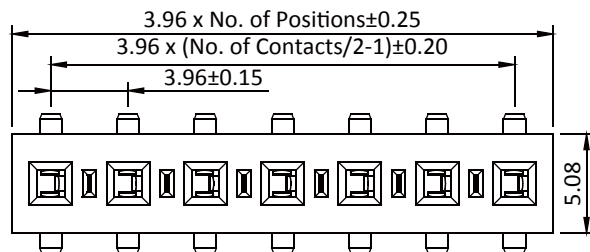
Insulator: Polyster, UL 94V-0
 Standard: LCP
 Terminal: Copper Alloy
 Plating: Tin Plated

ORDER INFORMATION



◎: Standard Recommend

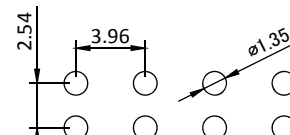
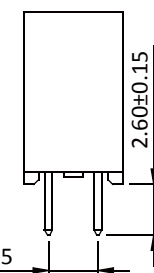
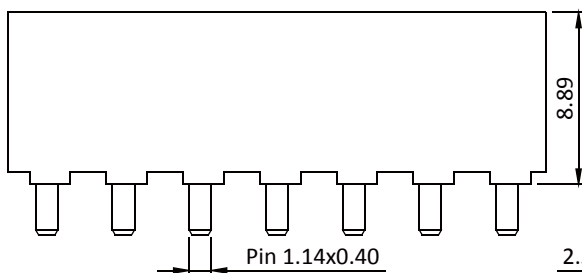
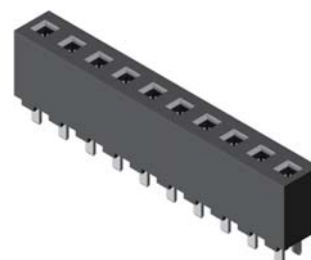
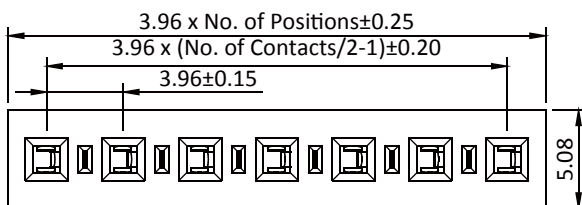
Female Header 3.96mm 1 Row H=8.89mm SMT Type



Recommended PCB Layout (PCB TOLERANCE ±0.05)

Part No.: PS396M89-1XX-U

Female Header 3.96mm 1 Row H=8.89mm Straight Type



Recommended PCB Layout (PCB TOLERANCE ±0.05)

Part No.: PS396S-1XX-U

Female Header 3.96mm



ROHS