



Female Header 5.08mm SMT / Straight Type

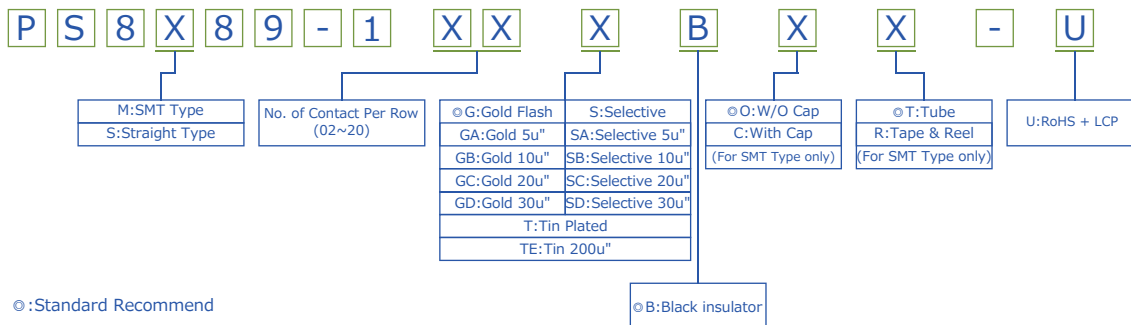
Specifications

Current Rate: 7 AMP
 Insulation Resistance: 1000MΩ Min.
 Contact Resistance: 20mΩ Max.
 Dielectric Voltage: 1000V AC for one minute
 Operation Temperature: -40°C to +105°C

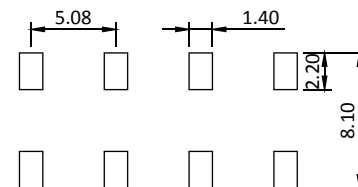
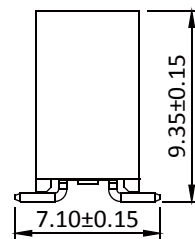
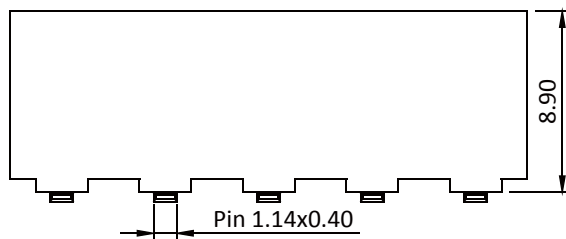
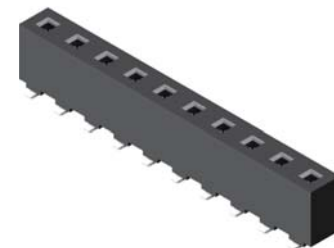
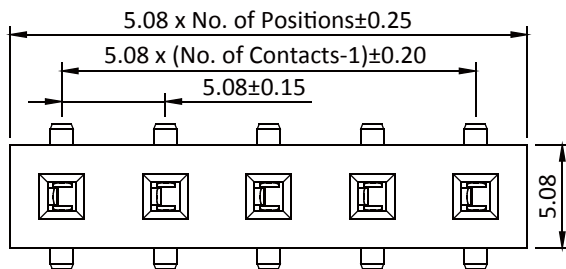
Material

Insulator: Polyster, UL 94V-0
 Standard: LCP
 Terminal: Copper Alloy
 Plating: Tin Plated

ORDER INFORMATION



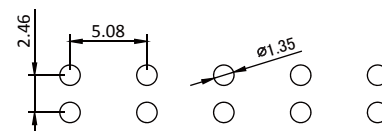
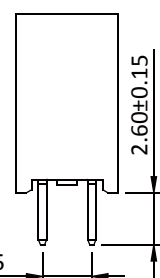
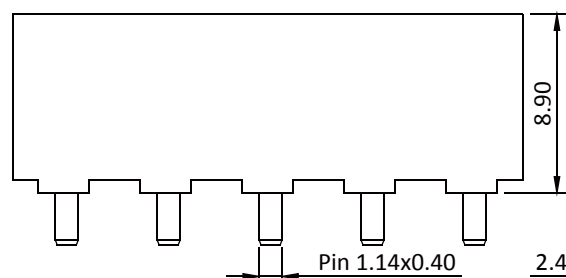
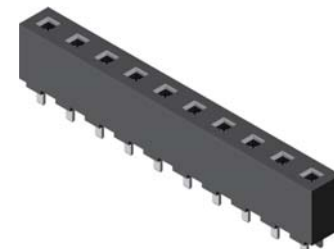
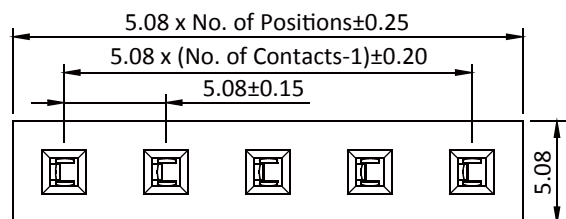
Female Header 5.08mm 1 Row H=8.9mm SMT Type



Recommended PCB Layout
(PCB TOLERANCE ±0.05)

Part No.: PS8M89-1XX-U

Female Header 5.08mm 1 Row H=8.9mm Straight Type



Recommended PCB Layout
(PCB TOLERANCE ±0.05)

Part No.: PS8S89-1XX-U

Female Header 5.08mm



ROHS

AMTEK CONNECTORS MANUFACTURER