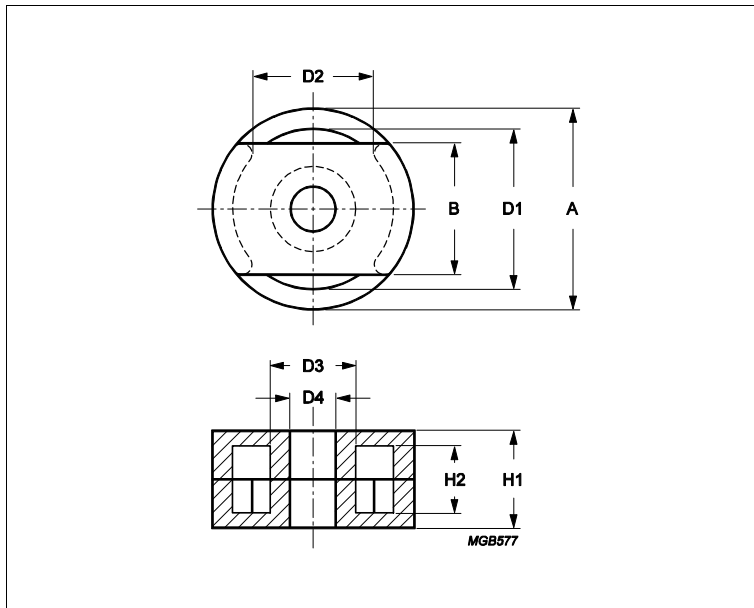


Core **PT23/11**



Effective parameters			
	Parameter	Value	Unit
$\Sigma(I/A)$	core factor (C1)	0.47	mm ⁻¹
Ve	effective volume	1740	mm ³
Le	effective length	28.6	mm
Ae	effective area	61	mm ²
Amin	minimum area	53.6	mm ²
m	PT23/11	≈ 10.5	g/set

Dimensions for product: PT23/11						
	Nom	Tol +	Tol -	Max	Min	Unit
A	22.90	0.45	0.45	23.35	22.45	mm
B	15.20	0.25	0.25	15.45	14.95	mm
D1	18.30	0.35	0.35	18.65	17.95	mm
D2					13.20	mm
D3	9.70	0.20	0.20	9.90	9.50	mm
D4	5.10	0.10	0.10	5.20	5.00	mm
H1	11.00	0.25	0.25	11.25	10.75	mm
H2	7.50	0.25	0.25	7.75	7.25	mm

Inductance factor				
Material	Value	Tol +	Tol -	Unit
3C91	5500	25%	25%	nH/turns ²

Power loss: 3C91				
Measuring conditions			Max	Unit
100 kHz	200 mT	60 °C	0.870	W/set

Bsat					
Measuring conditions			Material	Min	Unit
25 kHz	250 A/m	100 °C	3C91	320	mT

Accessories		
Ordering name	Description	Ordering code
CPV-PT23/11-1S-10P-Z	Coil former, termoplastic, vertical	433506026681