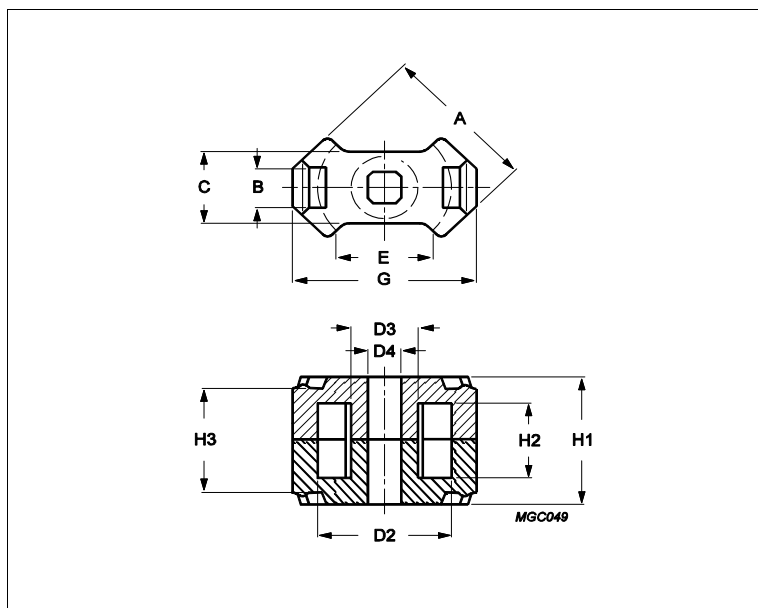


Core **RM5**



Effective parameters			
	Parameter	Value	Unit
$\Sigma(I/A)$	core factor (C1)	1.01	mm ⁻¹
Ve	effective volume	450	mm ³
Le	effective length	21.4	mm
Ae	effective area	21.2	mm ²
Amin	minimum area	14.8	mm ²
m	RM5	≈ 3.1	g/set

Dimensions for product: RM5						
	Nom	Tol +	Tol -	Max	Min	Unit
A	12.30	0.00	0.50	12.30	11.80	mm
B	2.60			2.60	2.60	mm
C	6.80	0.00	0.40	6.80	6.40	mm
D2	10.20	0.40	0.00	10.60	10.20	mm
D3	4.90	0.00	2.00	4.90	2.90	mm
D4	2.04	0.06	0.00	2.10	2.04	mm
E					6.00	mm
G					14.90	mm
H1	10.40	0.10	0.10	10.50	10.30	mm
H2	6.30	0.40	0.00	6.70	6.30	mm
H3	9.10	0.20	0.20	9.30	8.90	mm

Inductance factor				
Material	Value	Tol +	Tol -	Unit
3D3	800	25%	25%	nH/turns ²
3H3	1650	25%	25%	nH/turns ²

Accessories		
Ordering name	Description	Ordering code
CLI/P-RM4/5	Clip, with ground pin	432202131904

Core **RM5**

CPV-RM5-1S-8PD-Z	Coil former, termoplastic, vertical	432202106211
CSV-RM5-1S-4P-C	Coil former, termoset, vertical	432202107461
CSV-RM5-1S-4P-IZ	Coil former, termoset, vertical	432202106871
CSV-RM5-1S-6P-G	Coil former, termoset, vertical	432202100851
CSV-RM5-1S-6P-TZ	Coil former, termoset, vertical	432202106231
CSV-RM5-2S-4P-IZ	Coil former, termoset, vertical	432202106881
CSV-RM5-2S-6P	Coil former, termoset, vertical	432202134501
CSV-S-RM5-1S-8P	Coil former, termoset, vertical, SMD	432202102881
CSV-S-RM5-1S-8P-Z	Coil former, termoset, vertical, SMD	432202106361

www.signal.com.tr