



CONNECTORS MANUFACTURER

S.ATA Conn. Series

Specifications

Current Rate:1.5 AMP
 Insulation Resistance:1000MΩ Max
 Contact Resistance:30 mΩ Min
 Dielectric Voltage:500V AC for one minute
 Operation Temperature:-55°C to +125°C

Material

Insulator:Polyester,UL 94V-0

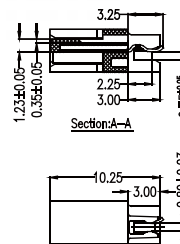
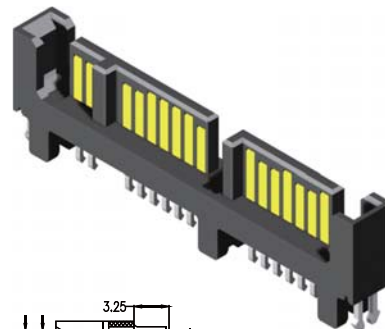
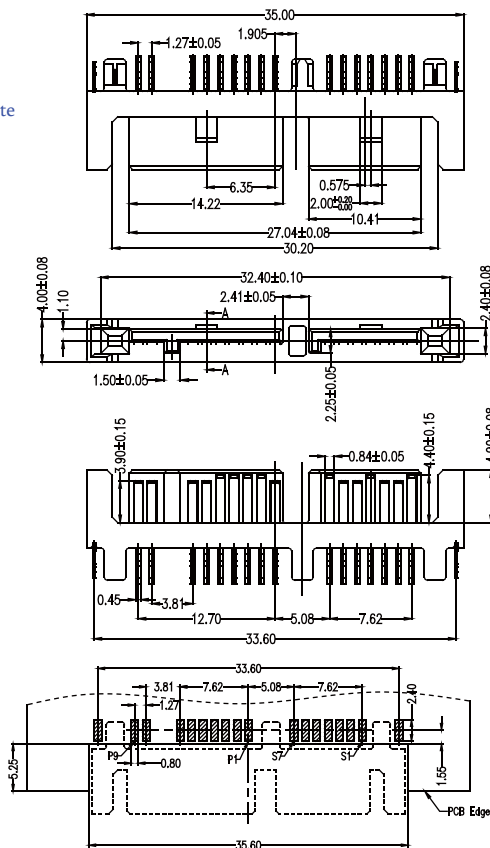
©Standard:LCP

Terminal:Brass

Plating:Selective Plating

Pin Number	Signal Name
S1	GND
S2	RX+
S3	RX-
S4	GND
S5	TX-
S6	TX+
S7	GND

Pin Number	Power Line Designation
P1	+3.3V
P2	+3.3V
P3	GND
P4	GND
P5	+5.5V
P6	+5.5V
P7	DAS/DSS
P8	Optional
P9	Optional



Recommended PCB Layout
 (PCB TOLERANCE ±0.05)

Part No.:SATAMR-M16SB-V4-U

Specifications

Current Rate:1.5 AMP
 Insulation Resistance:1000MΩ Min
 Contact Resistance:30 mΩ Max
 Dielectric Voltage:500V AC for one minute
 Operation Temperature:-55°C to +125°C

Material

Insulator:Polyester,UL 94V-0

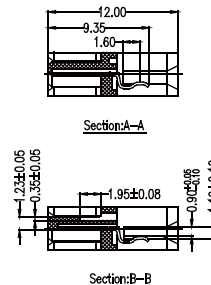
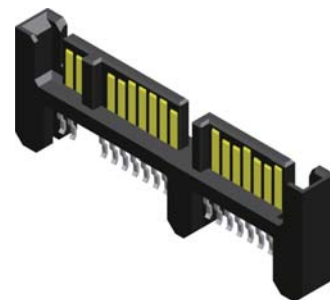
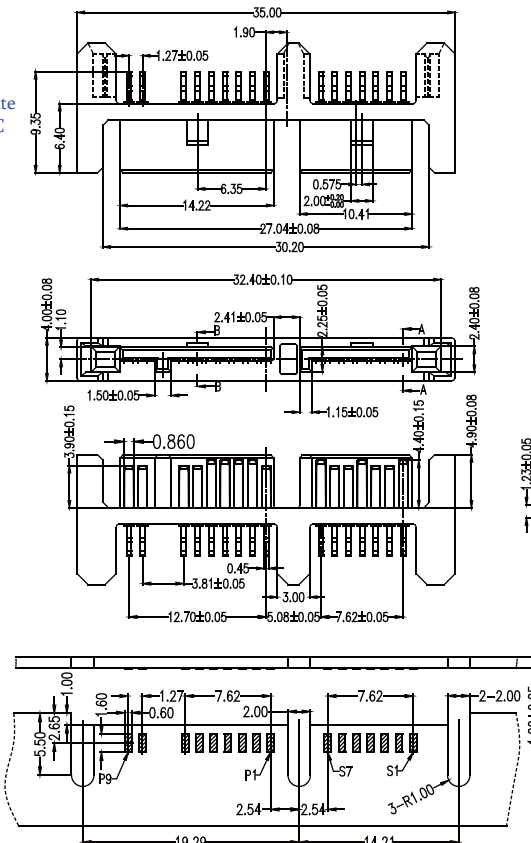
©Standard:LCP

Terminal:Brass

Plating:Selective Plating

Pin Number	Signal Name
S1	GND
S2	RX+
S3	RX-
S4	GND
S5	TX-
S6	TX+
S7	GND

Pin Number	Power Line Designation
P1	+3.3V
P2	+3.3V
P3	GND
P4	GND
P5	+5.5V
P6	+5.5V
P7	DAS/DSS
P8	Optional
P9	Optional



Recommended PCB Layout
 (PCB TOLERANCE ±0.05)

Part No.:SATAMR-M16SB-V7-U

Serial ATA

Pb ROHS