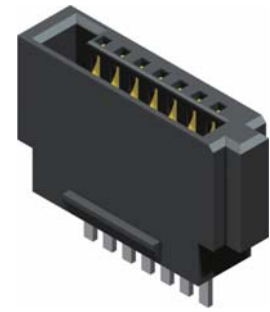
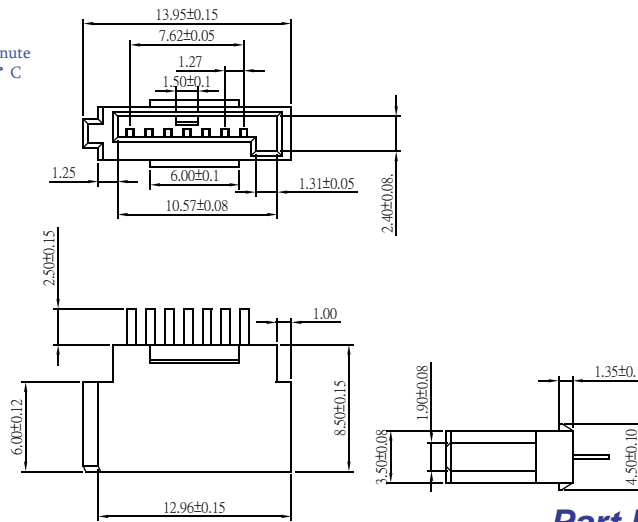




S.ATA Conn. Series

Specifications

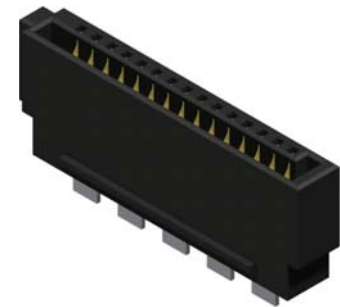
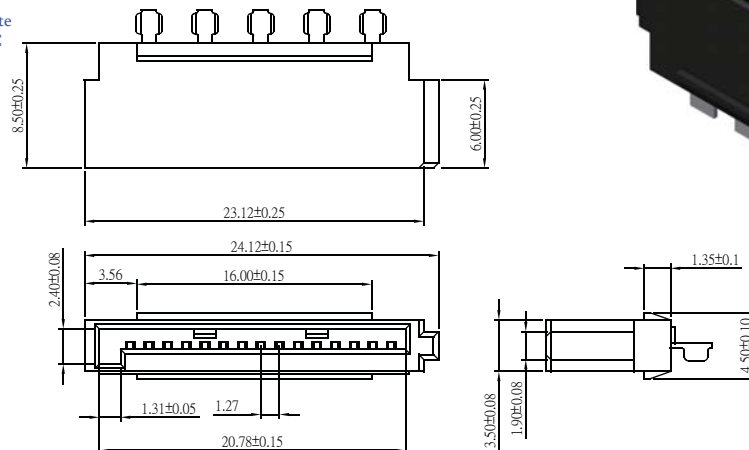
Current Rate:1.5 AMP
 Insulation Resistance:1000M Ω Min
 Contact Resistance:30 m Ω Max
 Dielectric Voltage:500V AC for one minute
 Operation Temperature:-55° C to +125° C
 Material
 Insulator:Polyester,UL 94V-0
 ©Standard:PBT
 Terminal:Phosphor Bronze
 Plating:Selective Plating



Part No.:SATAS-F07SB-L

Specifications

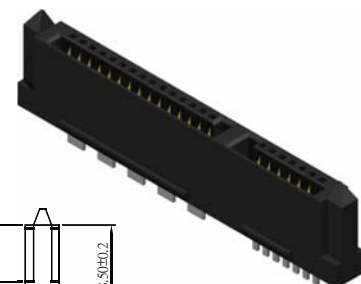
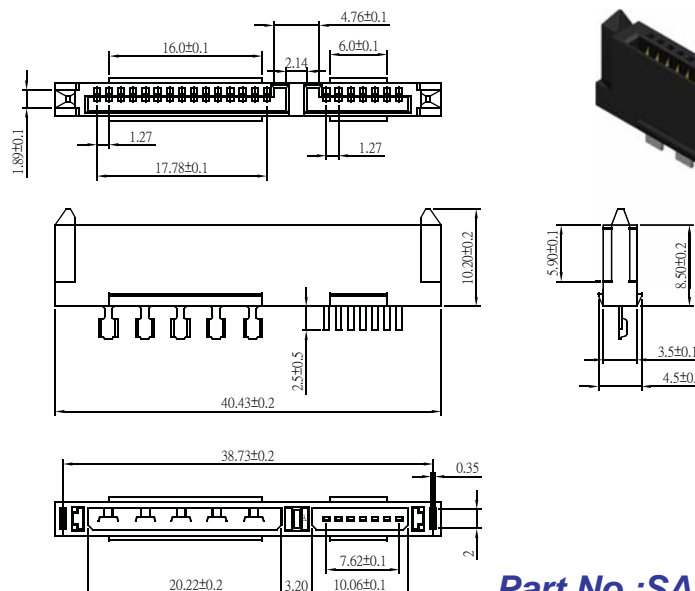
Current Rate:1.5 AMP
 Insulation Resistance:1000M Ω Min
 Contact Resistance:30 m Ω Max
 Dielectric Voltage:500V AC for one minute
 Operation Temperature:-55° C to +125° C
 Material
 Insulator:Polyester,UL 94V-0
 ©Standard:PBT
 Terminal:Phosphor Bronze
 Plating:Selective Plating



Part No.:SATAS-F15SB-L

Specifications

Current Rate:1.5 AMP
 Insulation Resistance:1000M Ω Min
 Contact Resistance:30 m Ω Max
 Dielectric Voltage:500V AC for one minute
 Operation Temperature:-55° C to +125° C
 Material
 Insulator:Polyester,UL 94V-0
 ©Standard:PBT
 Terminal:Phosphor Bronze
 Plating:Selective Plating



Part No.:SATAS-F22SB-L

S
 erial ATA

Pb
 ROHS

COMMERCIAL MANUFACTURING