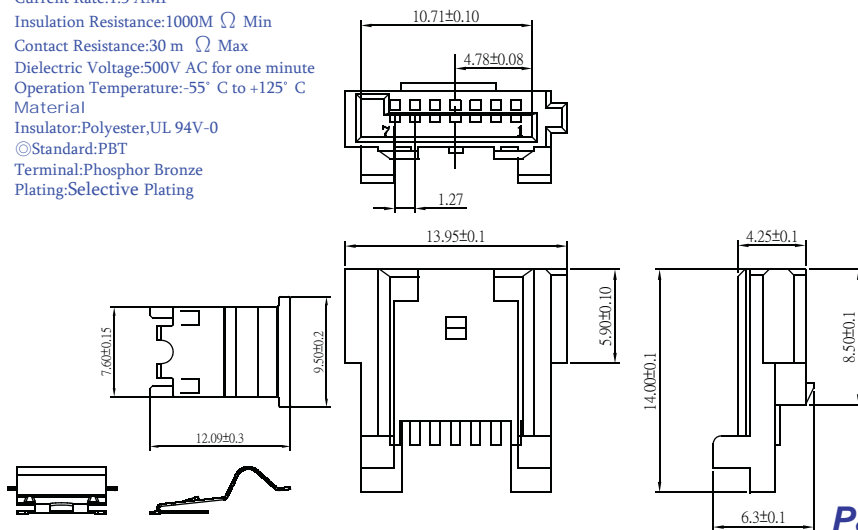


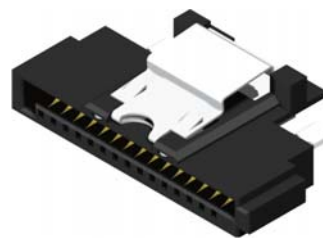
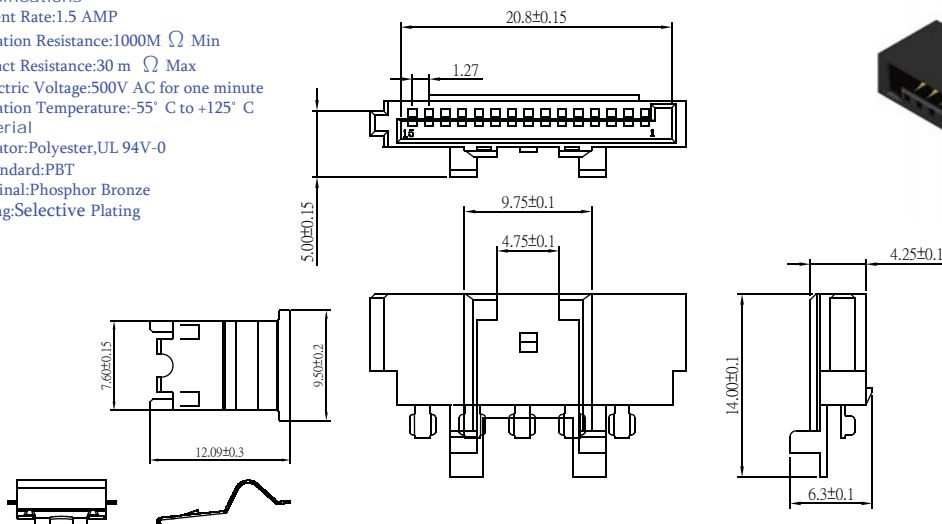
## S.ATA Conn. Series

**Specifications**  
 Current Rate:1.5 AMP  
 Insulation Resistance:1000M  $\Omega$  Min  
 Contact Resistance:30 m  $\Omega$  Max  
 Dielectric Voltage:500V AC for one minute  
 Operation Temperature:-55° C to +125° C  
**Material**  
 Insulator:Polyester,UL 94V-0  
 ©Standard:PBT  
 Terminal:Phosphor Bronze  
 Plating:Selective Plating



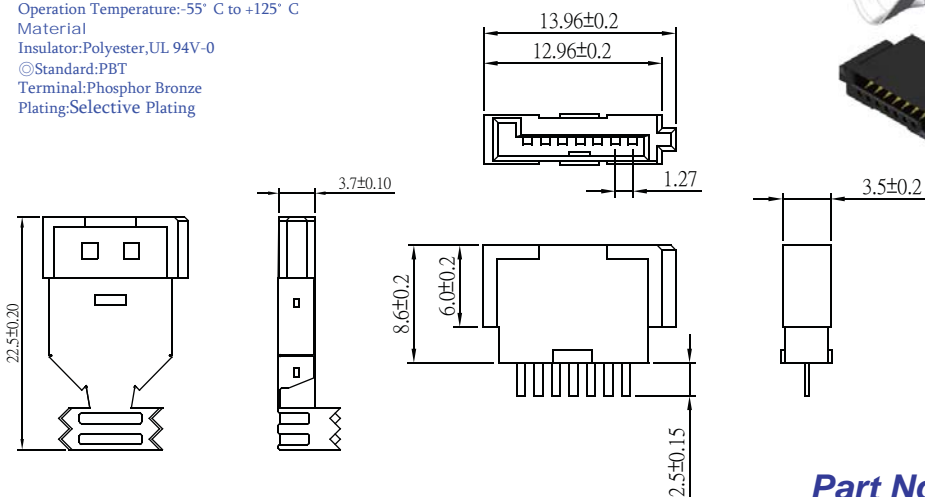
**Part No.:SATASL-F07SB-L**

**Specifications**  
 Current Rate:1.5 AMP  
 Insulation Resistance:1000M  $\Omega$  Min  
 Contact Resistance:30 m  $\Omega$  Max  
 Dielectric Voltage:500V AC for one minute  
 Operation Temperature:-55° C to +125° C  
**Material**  
 Insulator:Polyester,UL 94V-0  
 ©Standard:PBT  
 Terminal:Phosphor Bronze  
 Plating:Selective Plating



**Part No.:SATASL-F15SB-L**

**Specifications**  
 Current Rate:1.5 AMP  
 Insulation Resistance:1000M  $\Omega$  Min  
 Contact Resistance:30 m  $\Omega$  Max  
 Dielectric Voltage:500V AC for one minute  
 Operation Temperature:-55° C to +125° C  
**Material**  
 Insulator:Polyester,UL 94V-0  
 ©Standard:PBT  
 Terminal:Phosphor Bronze  
 Plating:Selective Plating



**Part No.:SATASS-F07SB-L**