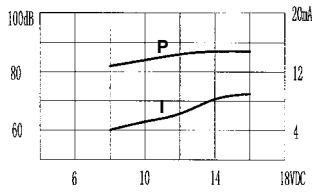
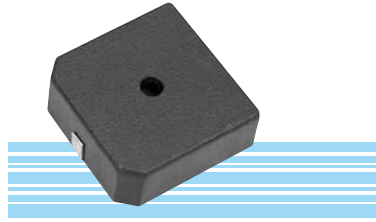


SPA-1712 SERIES SMT BUZZER



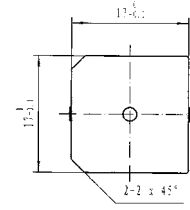
Model No	SPA-1712
Rated Voltage	12VDC
Operating Voltage	1.5~16 VDC
Max. Rated Current	10mA at 12VDC
Min. Sound Pressure Level	85dB / 12VDC/ 10cm
Resonant Frequency	4.0±0.5KHz
Operating Temperature	-20~+80 °C
Tone Nature	Continuous
Weight	2 g

* Value applying at rated voltage

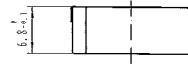


color Black
PPS Housing Material
SMT Terminal

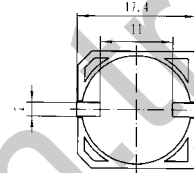
DIMENSIONS



Top View



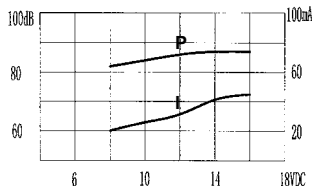
Side View



Bottom View

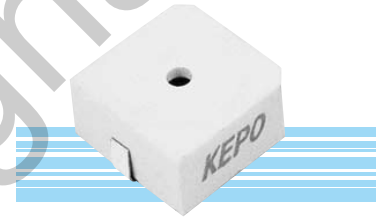
all dimensions are in mm

SMA-1200B SERIES SMT BUZZER



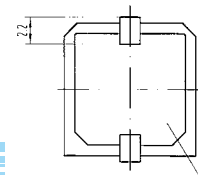
Model No	SMA-1201B	SMA-1205B	SMA-1212B
Rated Voltage	1.5V	5V	12V
Operating Voltage	1.4~3V	4~7V	8~15V
Max. Rated Current	20mA	40mA	40mA
Min. Sound Pressure Level	80dB/10cm	87dB/10cm	90dB/10cm
Resonant Frequency	2300Hz±300Hz	2300Hz±300Hz	2300Hz±300Hz
Operating Temperature	-20~+70 °C	-20~+70 °C	-20~+70 °C
Tone Nature	Continuous	Continuous	Continuous
Weight	2 g	2 g	2 g

* Value applying at rated voltage

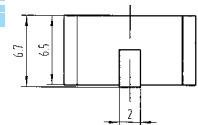


color black
PPS Housing Material
SMT Terminal

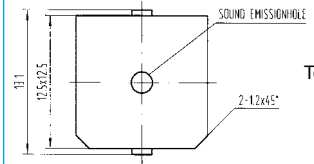
DIMENSIONS



Bottom View



Side View



Top View

all dimensions are in mm