



D-SUB Crimp Type

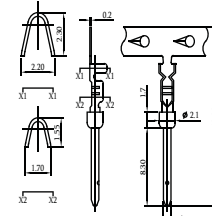
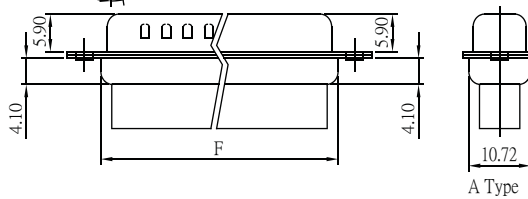
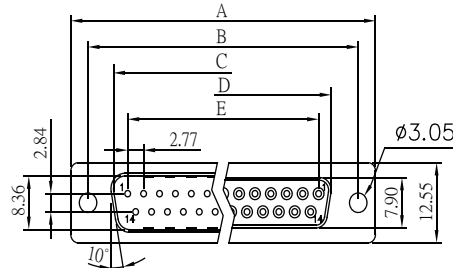
Specifications

Current Rate: 3 AMP
 Insulation Resistance: 1000MΩ Min.
 Contact Resistance: 20mΩ Max.
 Dielectric Voltage: 500V AC for one minute
 Operation Temperature: -55°C to +105°C

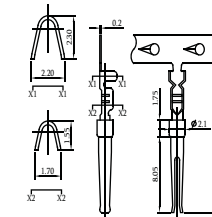
Material

Insulator: Polyester, UL 94V-0
 Standard: PBT
 Terminal: Copper Alloy

No. of Contacts	Dim. A	Dim. B	Dim. C	Dim. D	Dim. E	Dim. F
9	30.81	24.99	16.92	16.33	11.08	19.20
15	39.14	33.32	25.50	24.66	19.39	27.70
25	53.04	47.04	38.96	38.38	33.24	41.10
37	69.32	63.50	55.42	54.84	49.86	57.30

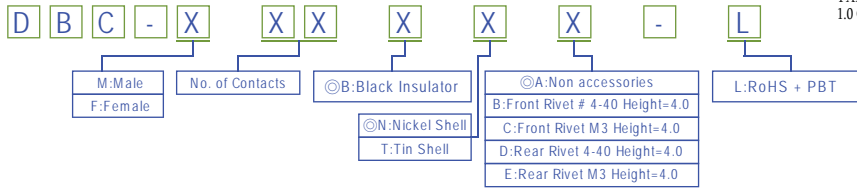


PART No.: DBC-MT-L
1.0 Crimp Pin Male



PART No.: DBC-FT-L
1.0 Crimp Pin Female

Order Information



D-SUB Elevated Dip Type

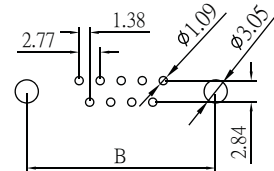
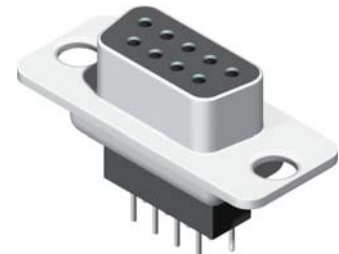
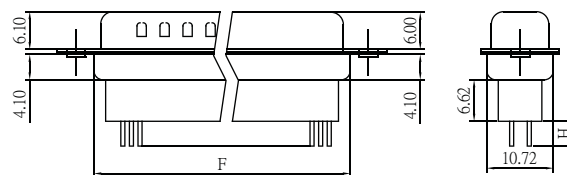
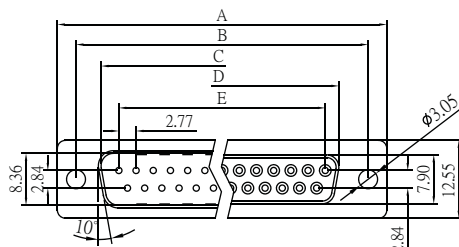
Specifications

Current Rate: 3 AMP
 Insulation Resistance: 1000MΩ Min.
 Contact Resistance: 20mΩ Max.
 Dielectric Voltage: 500V AC for one minute
 Operation Temperature: -55°C to +105°C

Material

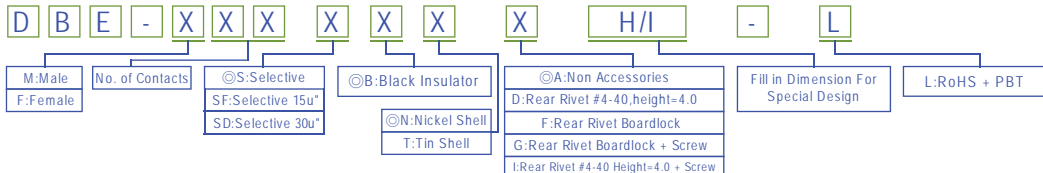
Insulator: Polyester, UL 94V-0
 Standard: PBT
 Terminal: Copper Alloy

No. of Contacts	Dim. A	Dim. B	Dim. C	Dim. D	Dim. E	Dim. H	Dim. I
9	30.81	24.99	16.92	11.08	19.20	3.60	11.10
15	39.14	33.32	25.50	19.39	27.51	5.40	12.70
25	53.04	47.04	38.96	33.24	41.00	7.20	14.50
37	69.32	63.50	55.42	49.86	57.71	7.20	14.50



Recommended PCB Layout
(PCB TOLERANCE ±0.05)

Order Information



Type See Page 5-1

D-SUB Conn. Series



ROHS

CONNECTOR MANUFACTURER