

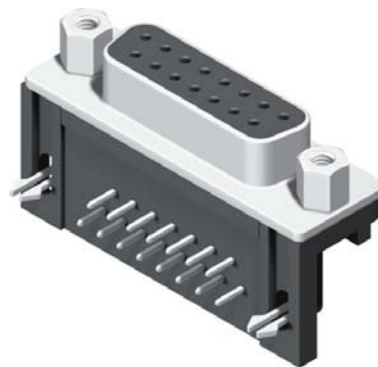
D-SUB Right Angle Type

Specifications

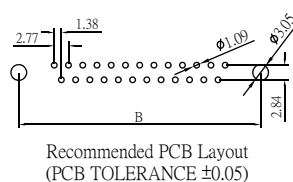
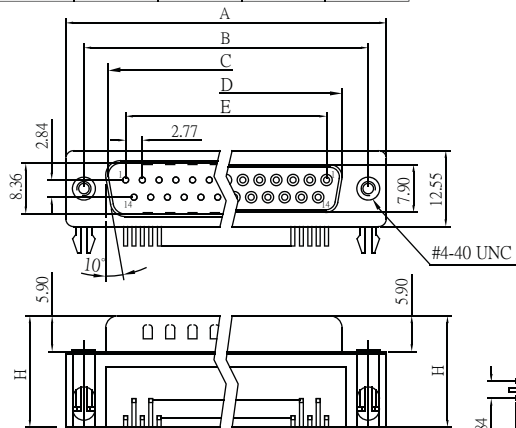
Current Rate:3 AMP
 Insulation Resistance:1000MΩ Min.
 Contact Resistance:20mΩ Max.
 Dielectric Voltage:500V AC for one minute
 Operation Temperature:-55°C to +105°C

Material

Insulator:Polyester,UL 94V-0
 © Standard:PBT
 Terminal:Copper Alloy.



No. of Contacts	Dim. A	Dim. B	Dim. C	Dim. D	Dim. E	Dim. H
9	30.81	24.99	16.92	16.33	11.08	18.40 (DBR1)
15	39.14	33.32	25.50	24.66	19.39	20.70 (DBR2)
25	53.04	47.04	38.96	38.38	33.24	25.30 (DBR3)
37	69.32	63.50	55.42	54.84	49.86	



Order Information

D B R X - X X X X 1 X - L

- 1:Foot Print=7.2
- 2:Foot Print=9.4
- 3:Foot Print=13.84
- M:Male
- F:Female
- No. of Contacts (09,15,25,37)
- G:Gold Flash
- GA:Gold 5u*
- GB:Gold 10u*
- GC:Gold 20u*
- GD:Gold 30u*
- ©S:Selective
- SA:Selective 5u*
- SB:Selective 10u*
- SC:Selective 20u*
- SD:Selective 30u*
- ©B:Black Insulator
- U:Blue Insulator
- W:White Insulator
- 1:Fork Grounding
- A:Jack Screw Insert
- B:Rivet
- C:Rivet & Jack Screw Attached
- D:Rear & Jack Screw Insert
- L:RoHS + PBT

Type See Page 5-1

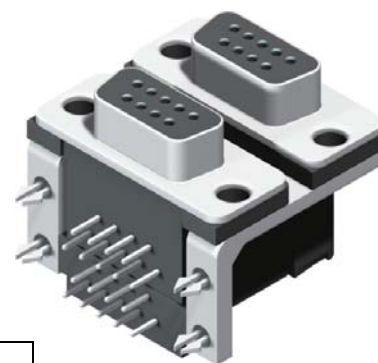
D-SUB Dual Port Right Angle Type

Specifications

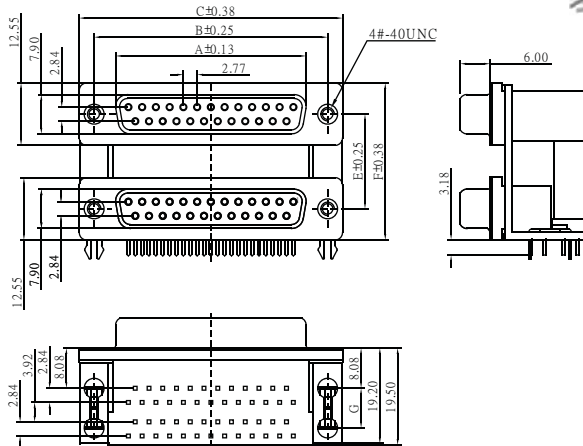
Current Rate:3 AMP
 Insulation Resistance:1000MΩ Min.
 Contact Resistance:20mΩ Max.
 Dielectric Voltage:500V AC for one minute
 Operation Temperature:-55°C to +105°C

Material

Terminal:Copper Alloy.
 ©Insulator: PBT, UL 94V-0



No. of Contacts	Dim. A	Dim. B	Dim. C	Dim. E	Dim. F	Dim. G
9	16.33	24.99	30.81	15.88	28.40	7.00
15	24.66	33.32	39.14	19.05	31.60	
25	38.38	47.04	53.04	22.86	35.40	
37	54.84	63.54	69.32			8.00



Order Information

D D B R X - X X X X X X X B X X - L

- Spacing Between(Dim. E)
- A:15.88mm
- B:19.05mm
- C:22.86mm
- M:Male(Top Conn.)
- F:Female(Top Conn.)
- No. of Contacts (09,15,25,37)
- M:Male(Bottom Conn.)
- F:Female(Bottom Conn.)
- No. of Contacts (09,15,25,37)
- ©S:Selective
- SF:Selective 15u*
- SD:Selective 30u*
- B:Black Insulator
- ©N:Nickel Shell
- T:Tin Shell
- Board Mounting(Dim G)
- A:None
- B:Dual Boardlock(8.0mm)
- C:Quad Boardlock(8.0mm)
- D:Dual Boardlock(7.0mm)
- E:Quad Boardlock(7.0mm)
- A:None
- B:Rivet
- C:Rivet & Jack Screw Attached
- D:Rivet & Jack Screw Insert
- L:RoHS + PBT