



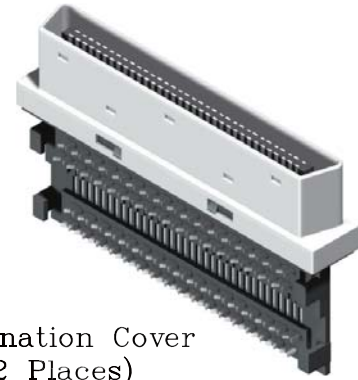
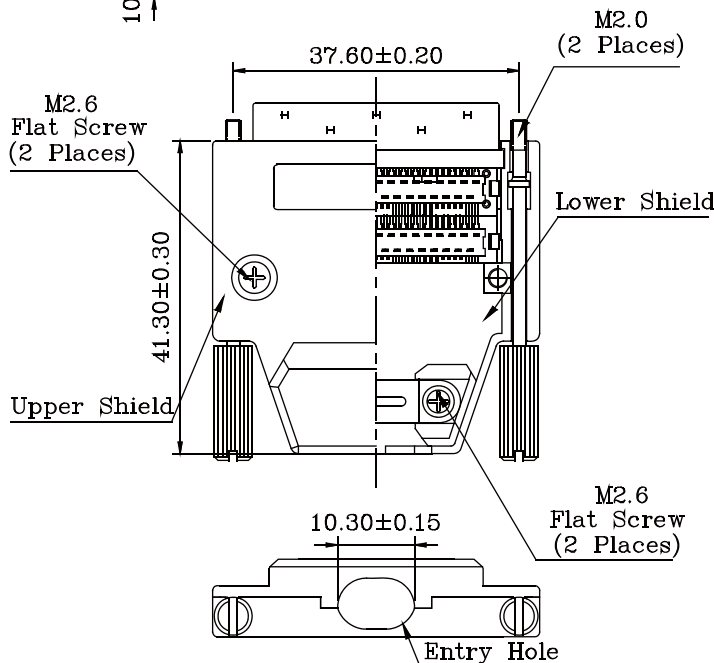
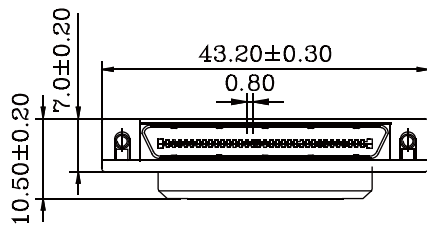
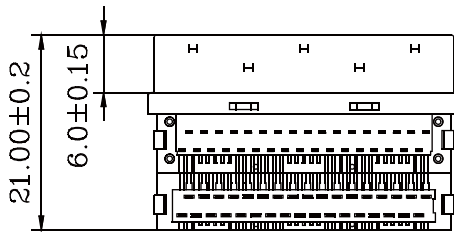
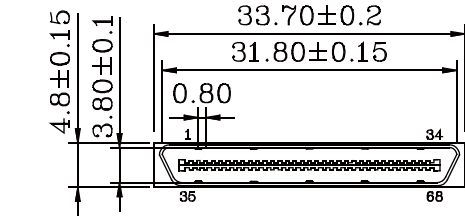
## SCSI Centronic IDC Type With Hood

### Specifications

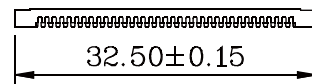
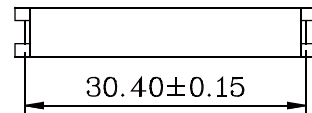
Current Rate: 1 AMP  
 Insulation Resistance: 500MΩ Min.  
 Contact Resistance: 35mΩ Max.  
 Dielectric Voltage: 500V AC for one minute  
 Operation Temperature: -55°C to +105°C

### Material

Insulator: Polyester, UL 94V-0  
 ©Standard: PBT  
 Terminal: Copper Alloy

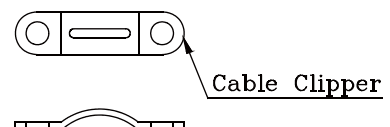
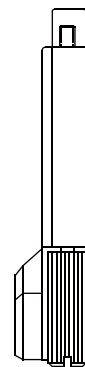


Termination Cover  
(2 Places)

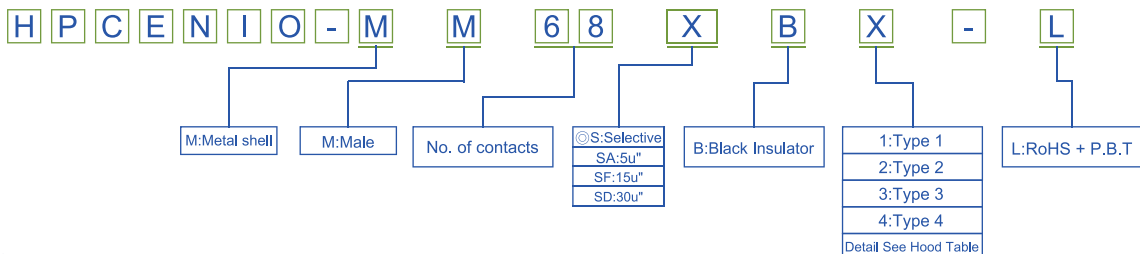


Hood Table

Type	Wire Holder	Entry Hold Size
1	0.61	∅0.85
2	0.68	∅0.85
3	0.61	∅10.50
4	0.68	∅10.50



### Order Information



©Standard Recommended

S CSI D-SUB

RoHS