

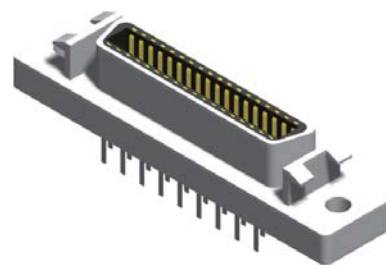
SCSI Centronic DIP Type

Specifications

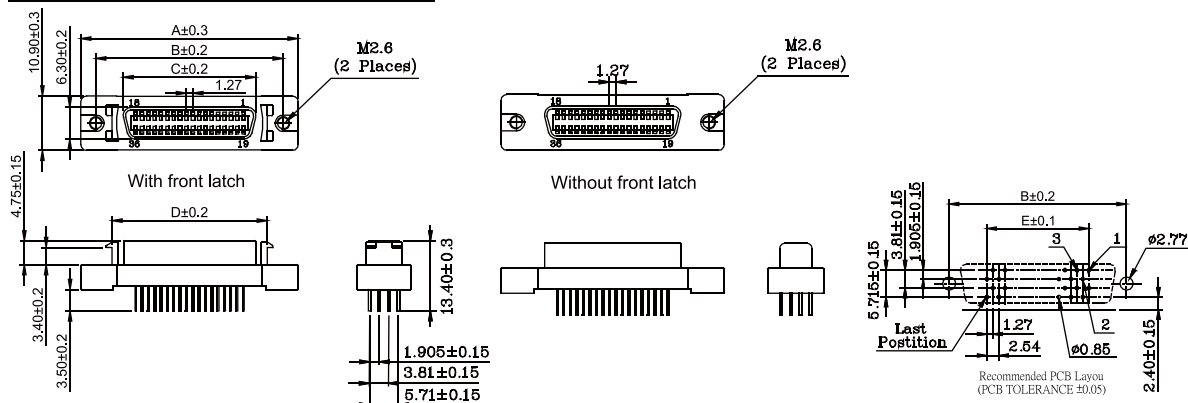
Current Rate: 1 AMP
 Insulation Resistance: 500MΩ Min.
 Contact Resistance: 35mΩ Max.
 Dielectric Voltage: 500V AC for one minute
 Operation Temperature: -55°C to +105°C

Material

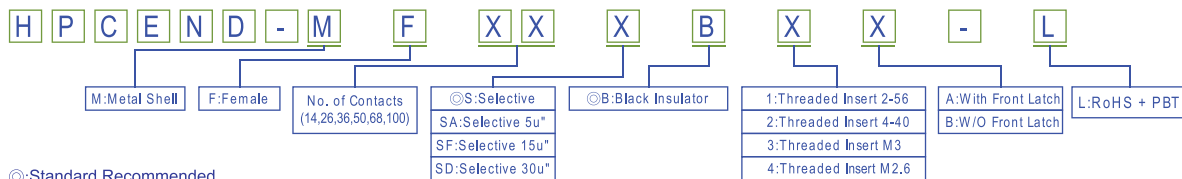
Insulator: Polyester, UL 94V-0
 ©Standard: PBT
 Terminal: Copper Alloy



No. of Contacts	Dim.A	Dim.B	Dim.C	Dim.D	Dim.E
14	29.60	23.64	12.63	17.08	7.62
26	37.20	31.20	20.25	24.70	15.24
36	43.50	37.60	26.60	31.00	21.60
50	52.60	46.50	35.40	40.10	30.48
68	64.00	57.90	46.90	51.00	41.91
100	84.18	78.23	67.14	71.50	62.23



Order Information



©: Standard Recommended

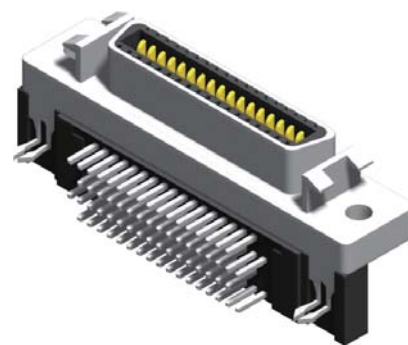
SCSI Centronic Right Angle Type

Specifications

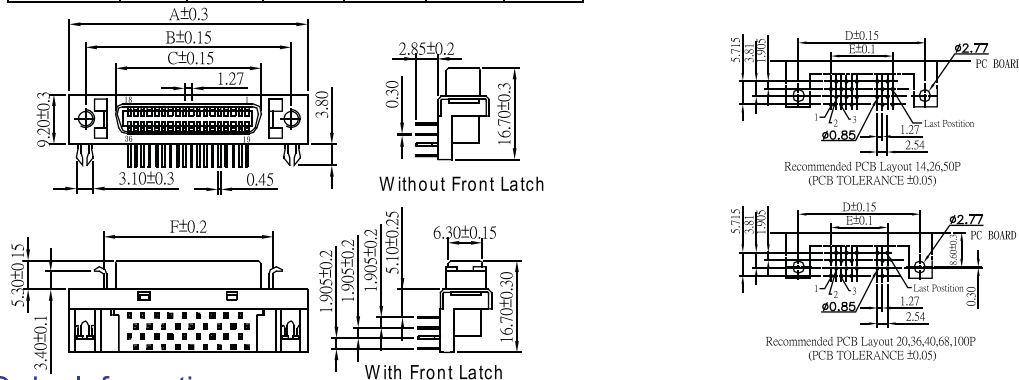
Current Rate: 1 AMP
 Insulation Resistance: 500MΩ Min.
 Contact Resistance: 35mΩ Max.
 Dielectric Voltage: 500V AC for one minute
 Operation Temperature: -55°C to +105°C

Material

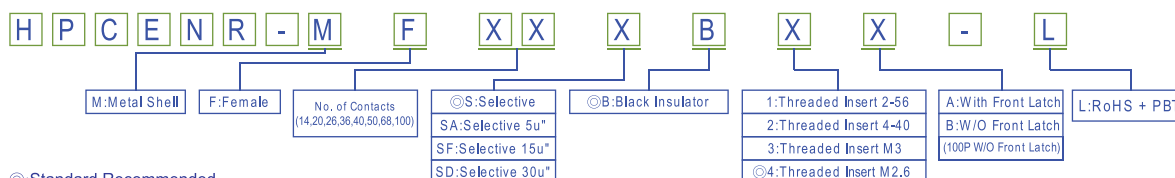
Insulator: Polyester, UL 94V-0
 ©Standard: PBT
 Terminal: Copper Alloy



No. of Contacts	A	B	C	D	E	F
14	29.57	23.64	12.63	23.64	7.62	17.02
20	33.38	27.45	16.44	27.45	11.43	20.83
26	37.19	31.26	20.25	31.26	15.24	24.64
36	43.54	37.61	26.60	37.61	21.59	30.99
40	46.15	40.15	29.14	40.15	24.13	33.70
50	53.43	46.50	35.49	46.50	30.48	39.88
68	63.86	57.93	46.92	57.60	41.91	51.30
100	84.18	78.23	67.14	78.10	62.23	



Order Information



©: Standard Recommended