



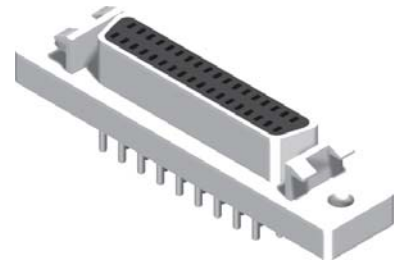
SCSI D-SUB Straight Dip Type

Specifications

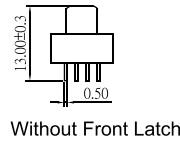
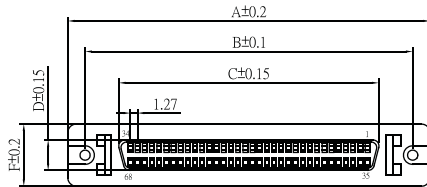
Current Rate: 1 AMP
 Insulation Resistance: 500MΩ Min.
 Contact Resistance: 35mΩ Max.
 Dielectric Voltage: 500V AC for one minute
 Operation Temperature: -55°C to +105°C

Material

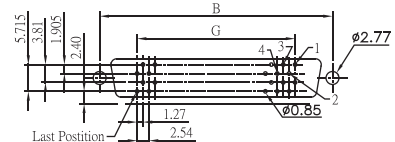
Insulator: Polyester, UL 94V-0
 ©Standard: PBT
 Terminal: Copper Alloy



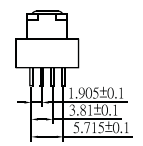
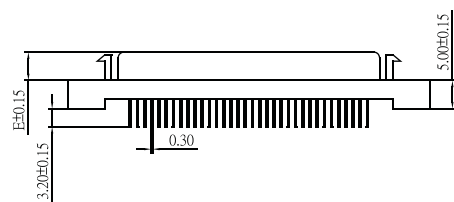
| No. of Contacts | Dim. A | Dim. B | Dim. C | Dim. D | Dim. E | Dim. F | Dim. G |
|-----------------|--------|--------|--------|--------|--------|--------|--------|
| 26 | 37.20 | 31.20 | 19.50 | 5.55 | 4.75 | 10.90 | 15.24 |
| 50 | 52.60 | 46.80 | 34.70 | 5.55 | 4.75 | 10.90 | 21.59 |
| 68 | 64.00 | 57.90 | 46.00 | 5.45 | 4.75 | 11.00 | 41.91 |



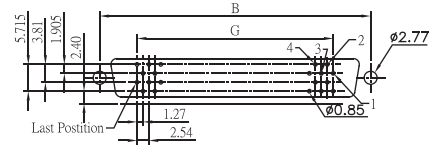
Without Front Latch



Recommended PCB Layout 26,50P
(PCB TOLERANCE ±0.05)

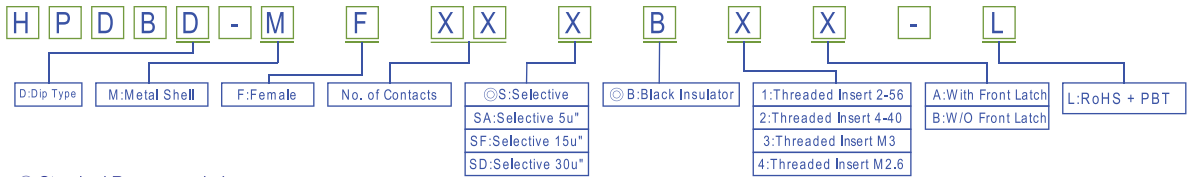


With Front Latch



Recommended PCB Layout 68P
(PCB TOLERANCE ±0.05)

Order Information



©: Standard Recommended

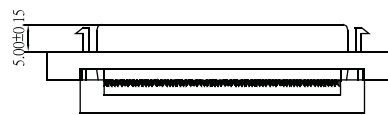
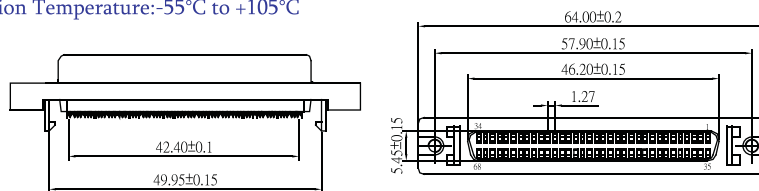
SCSI D-SUB IDC Female Type

Specifications

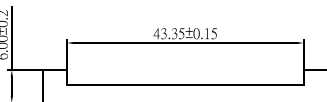
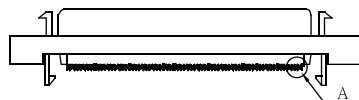
Current Rate: 1 AMP
 Insulation Resistance: 500MΩ Min.
 Contact Resistance: 35mΩ Max.
 Dielectric Voltage: 500V AC for one minute
 Operation Temperature: -55°C to +105°C

Material

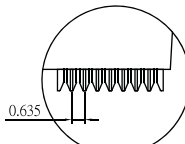
Insulator: Polyester, UL 94V-0
 ©Standard: PBT
 Terminal: Copper Alloy



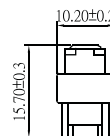
Without Front Latch



Cover

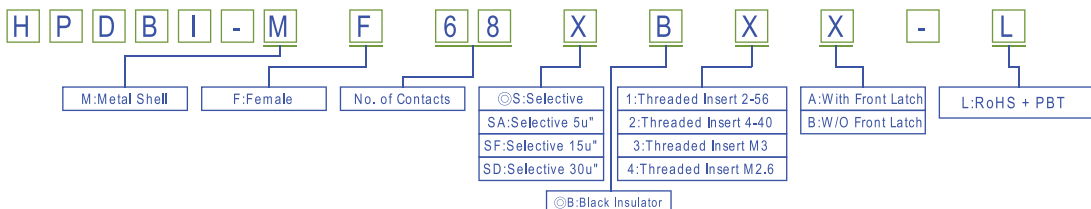


View A



With Front Latch

Order Information



©: Standard Recommended

SCSI D-SUB

Pb

ROHS

CONNECTOR MANUFACTURER