

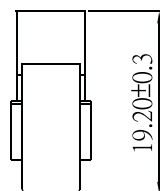
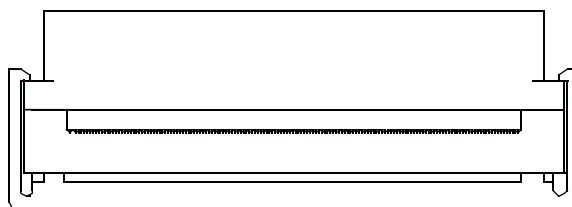
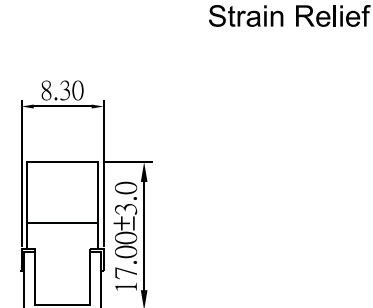
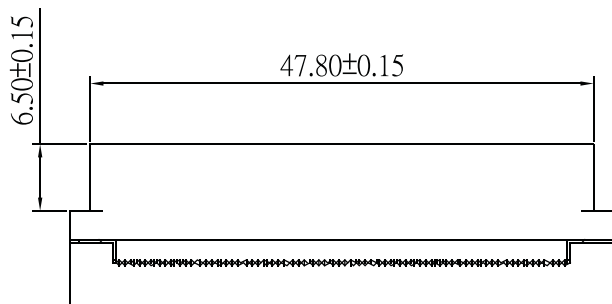
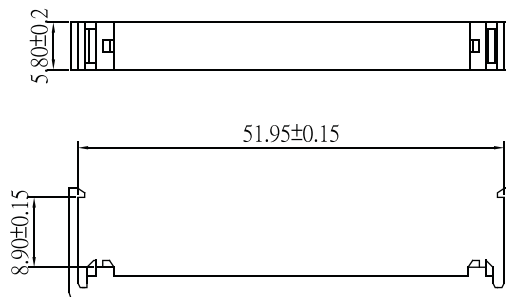
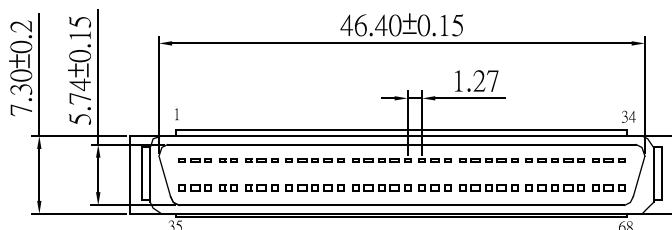
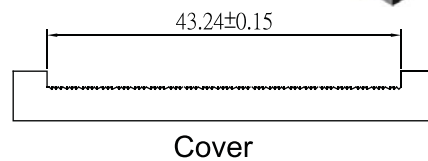
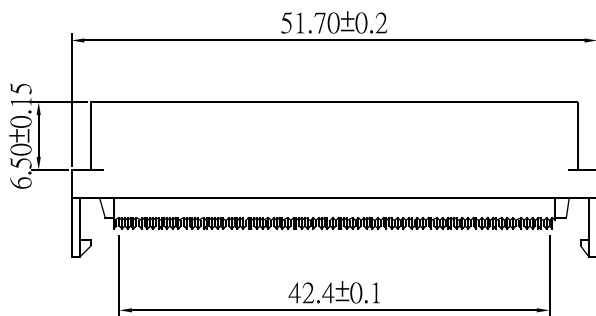
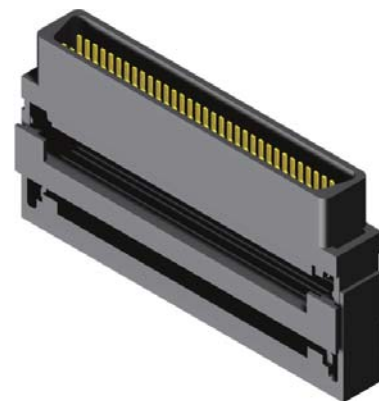
## SCSI D-SUB IDC Male Plastic Type

### Specifications

Current Rate:1 AMP  
 Insulation Resistance:500MΩ Min.  
 Contact Resistance:35mΩ Max.  
 Dielectric Voltage:500V AC for one minute  
 Operation Temperature:-55°C to +105°C

### Material

Insulator:Polyester,UL 94V-0  
 ◎Standard:PBT  
 Terminal:Copper Alloy



### Order Information

