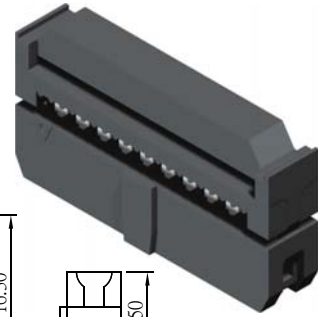
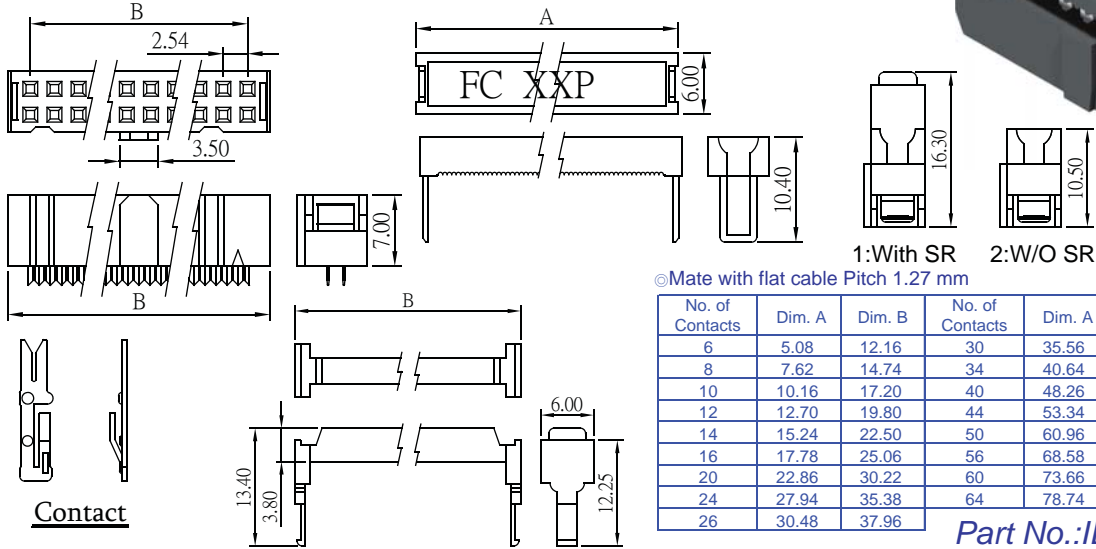


IDC Socket 2.54mm

Specifications
 Current Rate: 2.5AMP
 Insulation Resistance: 1000MΩ Min
 Contact Resistance: 20mΩ Max
 Dielectric Voltage: 1000V AC for one minute
 Operation Temperature: -55°C to +105°C

Material
 Insulator: Polyester, UL 94V-0
 ©Standard: PBT
 Terminal: Copper Alloy



©Mate with flat cable Pitch 1.27 mm

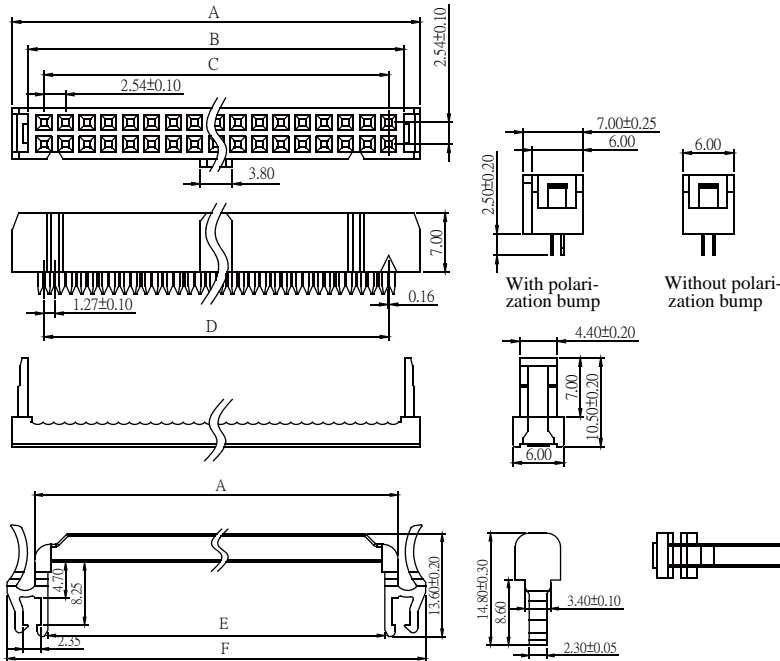
No. of Contacts	Dim. A	Dim. B	No. of Contacts	Dim. A	Dim. B
6	5.08	12.16	30	35.56	43.12
8	7.62	14.74	34	40.64	48.28
10	10.16	17.20	40	48.26	56.02
12	12.70	19.80	44	53.34	61.18
14	15.24	22.50	50	60.96	68.92
16	17.78	25.06	56	68.58	76.66
20	22.86	30.22	60	73.66	81.82
24	27.94	35.38	64	78.74	86.98
26	30.48	37.96			

Part No.: IDC1-XX-L

IDC Socket 2.54mm With SR

Specifications
 Current Rate: 3 AMP
 Insulation Resistance: 1000MΩ Min
 Contact Resistance: 20mΩ Max
 Dielectric Voltage: 500V AC for one minute
 Operation Temperature: -40°C to +105°C

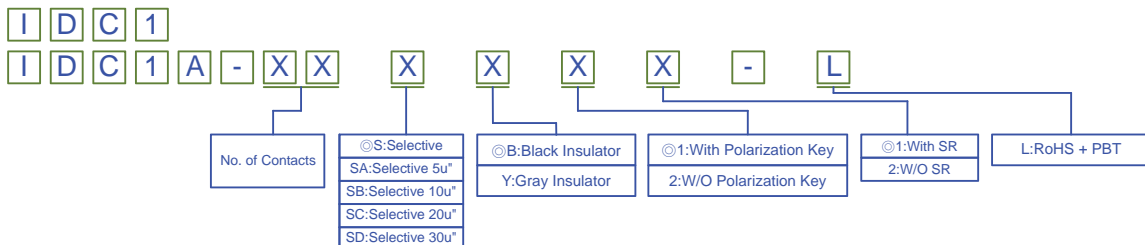
Material
 Insulator: Polyester, UL 94V-0
 ©Standard: PBT
 Terminal: Copper Alloy



No. of Contacts	Dimensions					
	A	B	C	D	E	F
10	30.10	26.30	10.16	11.43	13.20	24.30
14	40.26	36.46	15.24	16.51	18.58	29.38
16	45.34	41.54	17.78	19.05	21.12	31.92
20	55.50	51.70	22.86	24.13	26.20	37.00
26	70.74	66.94	30.48	31.72	33.82	44.62
34	91.06	87.26	40.64	41.73	43.98	54.78
40	106.30	102.50	48.26	49.53	51.60	62.40
50	131.70	127.90	60.96	62.23	64.30	75.10
60	157.10	153.30	73.66	74.93	77.00	87.80
64	167.26	163.46	78.74	80.01	82.08	92.88

Part No.: IDC1A-XX-L

ORDER INFORMATION



©Standard Recommended