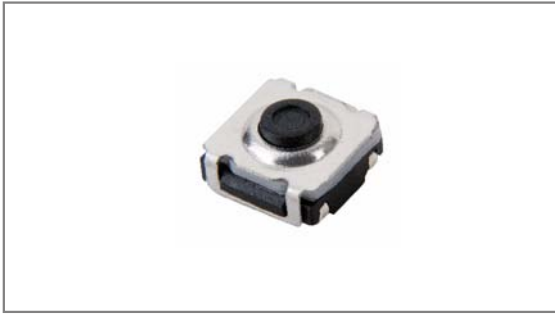


Sealed SMT Tact switches

INT-1162JP Series 6.2×6.2mm, Sealed with Rubber, Hard actuator, Surface mount type



- ▶ **Features** : IP67
- ▶ **Applications** : PC & Peripherals, Car AV equipments, Automobile, Communications devices
- ▶ **Specifications** :

Rating	DC 12V 50mA
Contact resistance	100mΩ Max.
Travel (mm)	0.25+0.3/-0

▶ **Part list**

Part No.	Length (mm)	Operating force	Life	QTY per pack (Tape & reel)
INT-1162JP35A	3.5	200±100gf	100,000 Cycles Min.	1.6K
INT-1162JP77A	7.7			750
INT-1162JP35B	3.5	300±100gf		1.6K
INT-1162JP77B	7.7			750
INT-1162JP35C	3.5	500±100gf		1.6K
INT-1162JP77C	7.7			750

▶ **Drawing**

Circuit diagram

PCB Dimension

- TACT Switches
- PUSH Switches
- HOOK Switches
- DETECTOR Switches
- SLIDE Switches
- ROTARY Potentiometers
- LEVER Switches
- ROTARY Switches
- CAPS