

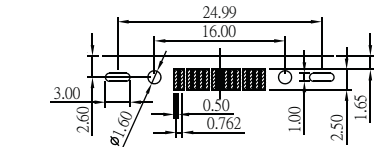
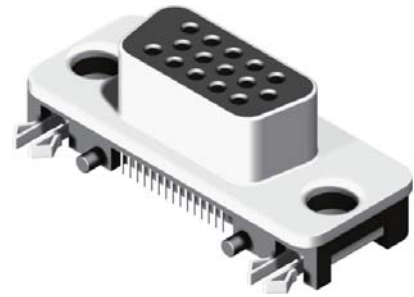
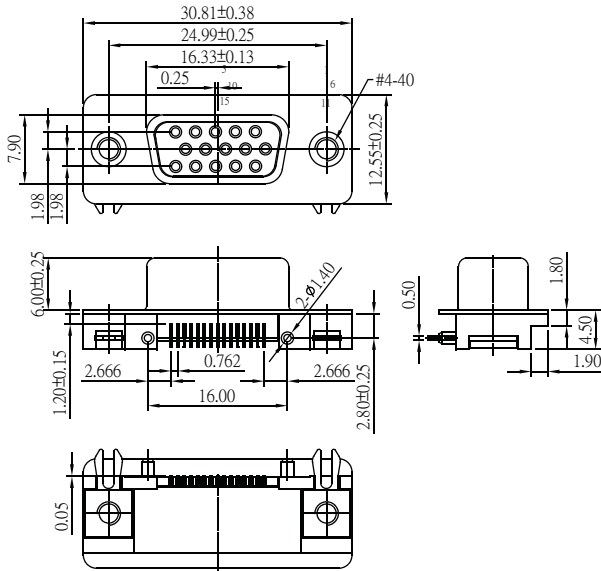
D-SUB H.D. Slim SMT Type

Specifications

Current Rate: 3 AMP
 Insulation Resistance: 1000MΩ Min.
 Contact Resistance: 25mΩ Max.
 Dielectric Voltage: 500V AC for one minute
 Operation Temperature: -55°C to +105°C

Material

Insulator: Polyester, UL 94V-0
 Standard: Nylon 6T
 Terminal: Copper Alloy



Pin Number :
 6 11 17 12 2 8 13 3 9 14 4 10 15 5

Recommended PCB Layout
 (PCB TOLERANCE ±0.05)

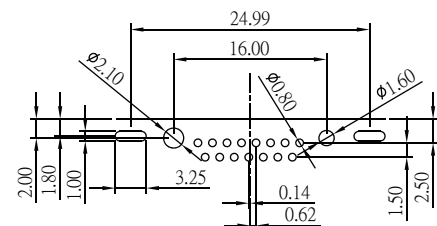
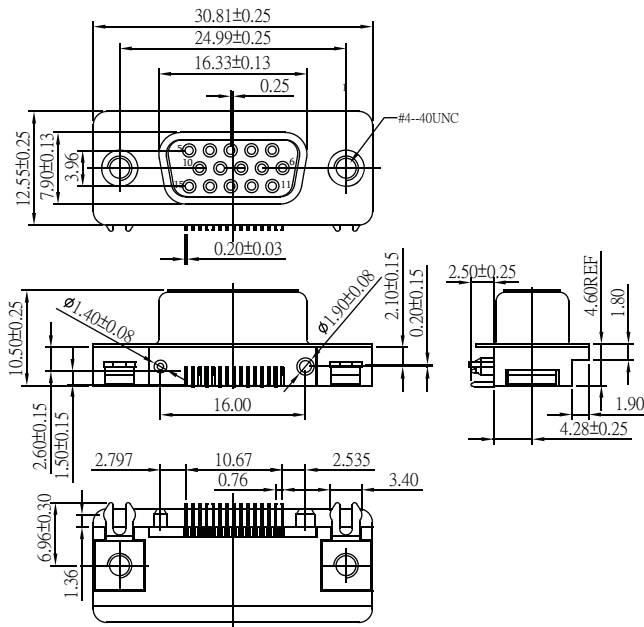
D-SUB H.D. Slim Right Angle Type

Specifications

Current Rate: 3 AMP
 Insulation Resistance: 1000MΩ Min.
 Contact Resistance: 25mΩ Max.
 Dielectric Voltage: 500V AC for one minute
 Operation Temperature: -55°C to +105°C

Material

Insulator: Polyester, UL 94V-0
 Standard: PBT
 Terminal: Copper Alloy



Pin Number : 6 11 2 8 13 4 10 15
 1 7 12 3 9 14 5

Recommended PCB Layout
 (PCB TOLERANCE ±0.05)

ORDER INFORMATION

