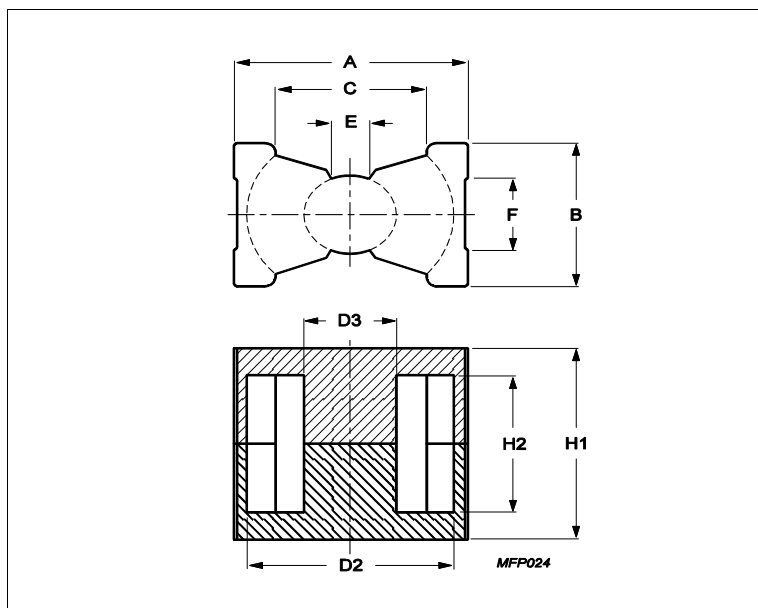


Core **PQ50/50**



| Effective parameters | | | |
|----------------------|------------------|-------|------------------|
| | Parameter | Value | Unit |
| $\Sigma(I/A)$ | core factor (C1) | 0.345 | mm ⁻¹ |
| Ve | effective volume | 37100 | mm ³ |
| Le | effective length | 113 | mm |
| Ae | effective area | 328 | mm ² |
| Amin | minimum area | 314 | mm ² |
| m | PQ50/50 | ≈ 195 | g/set |

| Dimensions for product: PQ50/50 | | | | | | |
|---------------------------------|-------|-------|-------|-------|-------|------|
| | Nom | Tol + | Tol - | Max | Min | Unit |
| A | 51.00 | 0.70 | 0.70 | 51.70 | 50.30 | mm |
| B | 32.00 | 0.60 | 0.60 | 32.60 | 31.40 | mm |
| C | | | | | 32.00 | mm |
| D2 | 44.00 | 0.70 | 0.70 | 44.70 | 43.30 | mm |
| D3 | 20.00 | 0.35 | 0.35 | 20.35 | 19.65 | mm |
| E | | | | | 8.15 | mm |
| F | | | | | 18.00 | mm |
| H1 | 50.00 | 0.50 | 0.50 | 50.50 | 49.50 | mm |
| H2 | 36.10 | 0.60 | 0.60 | 36.70 | 35.50 | mm |

| Inductance factor | | | | | |
|-------------------|-------|-------|-------|-----------------------|--|
| Material | Value | Tol + | Tol - | Unit | |
| 3C94 | 7400 | 25% | 25% | nH/turns ² | |
| 3C95 | 9200 | 25% | 25% | nH/turns ² | |
| 3C96 | 6300 | 25% | 25% | nH/turns ² | |
| 3C97 | 9200 | 25% | 25% | nH/turns ² | |
| 3F36 | 4200 | 25% | 25% | nH/turns ² | |
| 3F4 | 3000 | 25% | 25% | nH/turns ² | |

| Power loss: 3C94 | | | | | |
|----------------------|--------|--------|--------|-------|--|
| Measuring conditions | | | Max | Unit | |
| 100 kHz | 200 mT | 100 °C | 19.000 | W/set | |
| Power loss: 3C95 | | | | | |
| Measuring conditions | | | Max | Unit | |

Core **PQ50/50**

| Power loss: 3C95 | | | | |
|----------------------|--------|--------|--------|-------|
| Measuring conditions | | | Max | Unit |
| 100 kHz | 200 mT | 100 °C | 18.000 | W/set |
| 100 kHz | 200 mT | 25 °C | 19.000 | W/set |
| Power loss: 3C96 | | | | |
| Measuring conditions | | | Max | Unit |
| 100 kHz | 200 mT | 100 °C | 17.000 | W/set |
| 400 kHz | 50 mT | 100 °C | 9.600 | W/set |
| Power loss: 3C97 | | | | |
| Measuring conditions | | | Max | Unit |
| 100 kHz | 200 mT | 60 °C | 19.000 | W/set |
| 100 kHz | 200 mT | 120 °C | 18.000 | W/set |
| 100 kHz | 200 mT | 140 °C | 22.000 | W/set |
| Power loss: 3F36 | | | | |
| Measuring conditions | | | Max | Unit |
| 500 kHz | 50 mT | 100 °C | 7.900 | W/set |
| 500 kHz | 100 mT | 100 °C | 53.000 | W/set |
| Power loss: 3F4 | | | | |
| Measuring conditions | | | Max | Unit |
| 1000 kHz | 30 mT | 100 °C | 14.000 | W/set |
| 3000 kHz | 10 mT | 100 °C | 23.000 | W/set |

| Bsat | | | | | |
|----------------------|---------|--------|----------|-----|------|
| Measuring conditions | | | Material | Min | Unit |
| 25 kHz | 250 A/m | 100 °C | 3C94 | 320 | mT |
| 25 kHz | 250 A/m | 100 °C | 3C95 | 330 | mT |
| 25 kHz | 250 A/m | 100 °C | 3C96 | 340 | mT |
| 25 kHz | 250 A/m | 100 °C | 3C97 | 330 | mT |
| 25 kHz | 250 A/m | 100 °C | 3F36 | 340 | mT |
| 25 kHz | 250 A/m | 100 °C | 3F4 | 330 | mT |

| Accessories | | |
|--------------------|---------------------------------|--------------------|
| Ordering name | Description | Ordering code |
| CSV-PQ50/50-1S-12P | Coil former, termoset, vertical | F0SPQ05050CV00112P |