



**P**

Pluggable Terminal Block

**Pb**

ROHS

UL<sup>®</sup> CE



TB2ERTM-5.0  
TB2ERTM-5.08  
5.0mm 5.08mm / 23.2mm

Pitch / Height

Poles

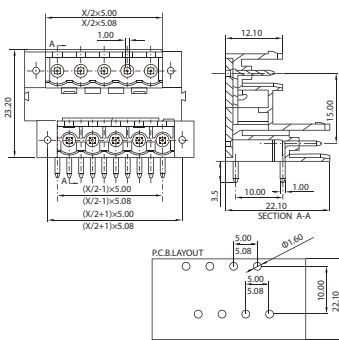
2P~24P

Rated

300V/15A

Wire

Drawing



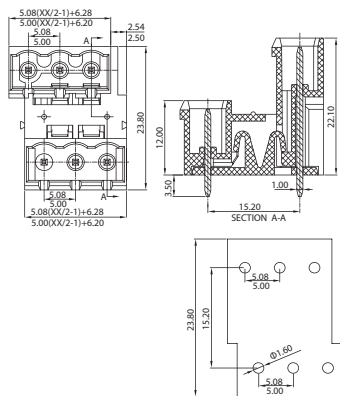
UL<sup>®</sup> CE



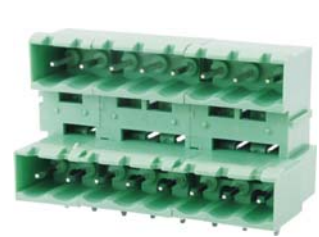
TB2EVTC-5.0  
TB2EVTC-5.08  
5.0mm 5.08mm / 22.1mm

Poles

300V/15A



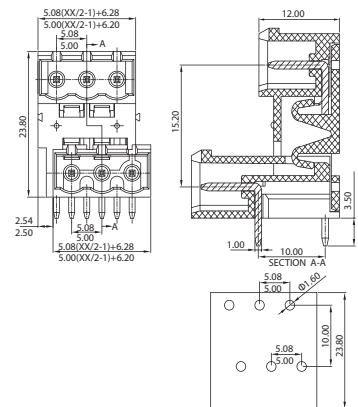
UL<sup>®</sup> CE



TB2ERTC-5.0  
TB2ERTC-5.08  
5.0mm 5.08mm / 23.8mm

Poles

300V/15A



UL<sup>®</sup> CE



TB2EVH-5.0  
TB2EVH-5.08  
5.0mm 5.08mm / 22.2mm

Pitch / Height

Poles

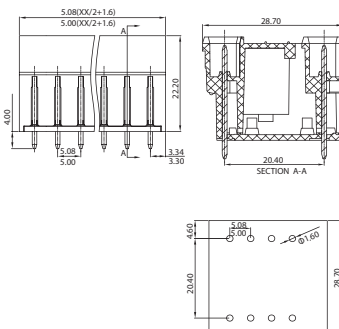
2P~24P

Rated

300V/15A

Wire

Drawing



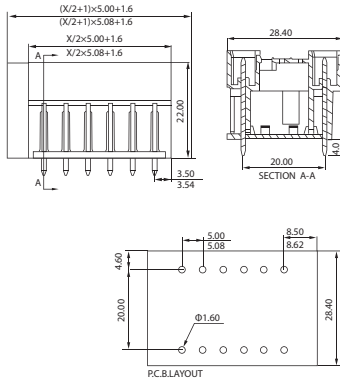
UL<sup>®</sup> CE



TB2EVHM-5.0  
TB2EVHM-5.08  
5.0mm 5.08mm / 22mm

Poles

300V/15A



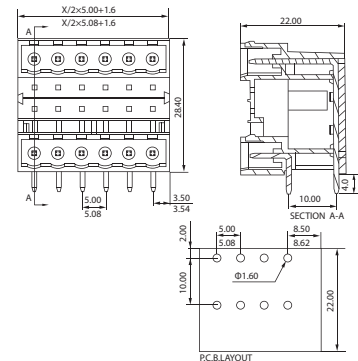
UL<sup>®</sup> CE



TB2ERH-5.0  
TB2ERH-5.08  
5.0mm 5.08mm / 28.4mm

Poles

300V/15A



AMTEK CONNECTORS MANUFACTURER