



D-SUB Conn. Series

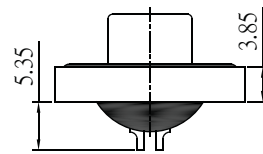
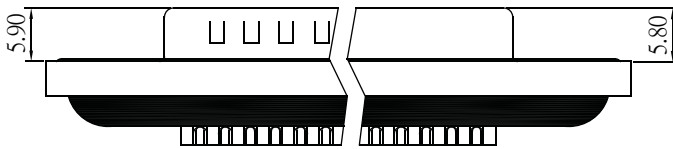
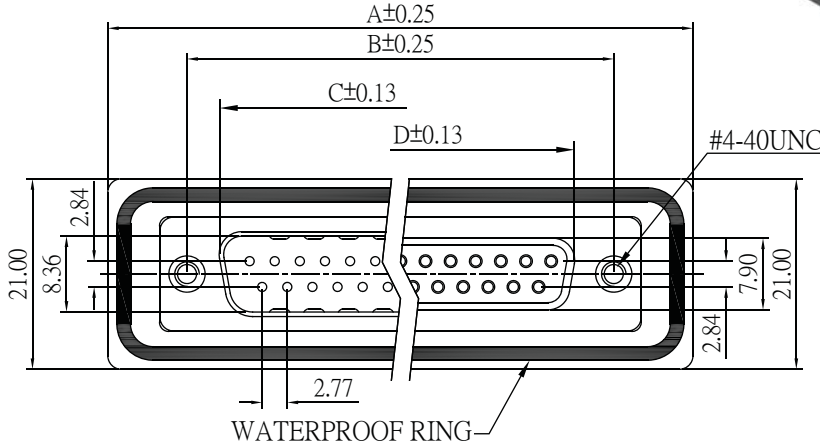
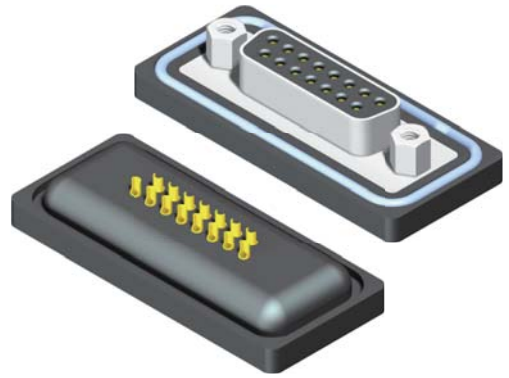
RoHS

Waterproof D-SUB Solder Type

Specifications
 Current Rate: 5 AMP
 Insulation Resistance: 5000MΩ Min.
 Contact Resistance: 10mΩ Max.
 Dielectric Voltage: AC 300V /ram 50Hz
 Operation Temperature: -55°C to +85°C

Material
 Terminal: Copper Alloy.
 Insulator: PBT

No. of Contacts	Dim. A	Dim. B	Dim. C	Dim. D
9	39.40	24.99	16.92	16.33
15	47.70	33.30	25.25	24.66
25	64.50	47.04	38.96	38.38

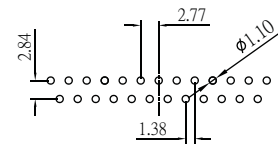
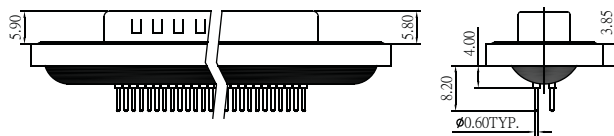
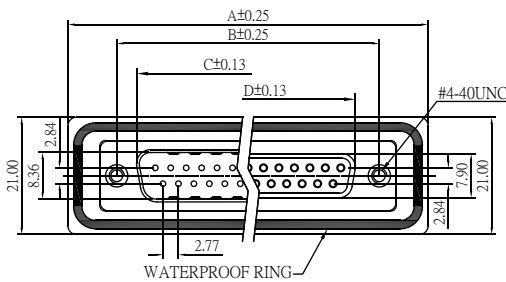
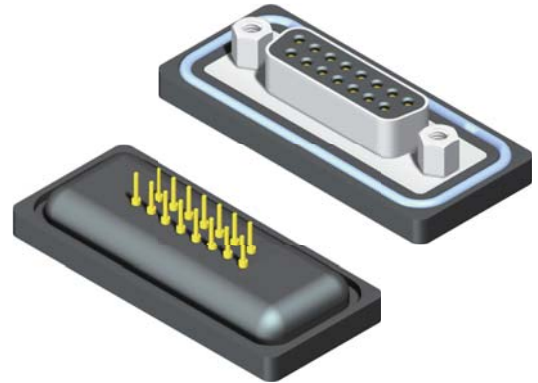


Waterproof D-SUB Dip Type

Specifications
 Current Rate: 5 AMP
 Insulation Resistance: 5000MΩ Min.
 Contact Resistance: 10mΩ Max.
 Dielectric Voltage: AC 300V /ram 50Hz
 Operation Temperature: -55°C to +85°C

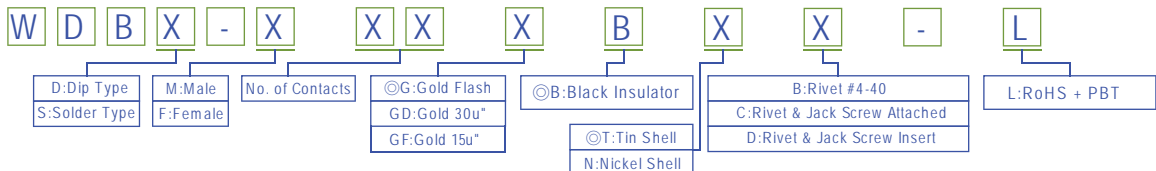
Material
 Terminal: Copper Alloy.
 Insulator: PBT

No. of Contacts	Dim. A	Dim. B	Dim. C	Dim. D
9	39.40	24.99	16.92	16.33
15	47.70	33.30	25.25	24.66
25	64.50	47.04	38.96	38.38



Recommended PCB Layout
 (PCB TOLERANCE ±0.05)

ORDER INFORMATION



Type See Page 5-2

COMMERCIAL MANUFACTURING